


Northern Cardigan Bay / Gogledd Bae Ceredigion

Tudalen
Page 1 / 3

 Ardal Gwarchodaeth Arbennig arfaethedig (AGAA)
potential Special Protection Area (pSPA)

 Ardaloedd Gwarchodaeth Arbennig Eraill (AGA)
Other Special Protection Areas (SPA)

AGA arfaethedig
Potential SPA 82,312.9 ha

Hydred
Longitude -4.2481 gradd degol
decimal degrees

Lledred
Latitude 52.6521 gradd degol
decimal degrees

G/N



N.G. Mae'r ffigurau Lledred/Hydred i gyd wedi deillio o System Geodesig y Byd 84 (WGS 84)

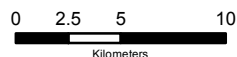
N.B. All Latitude/Longitude figures have been derived from World Geodetic System 84 (WGS 84).

Tafuniad map: Y Grid Cenedlaethol Prydeinig

Projection: **British National Grid**

Rhif diweddaraf
Version number 1 27/07/2015

Graddfa / Scale **1:360,000**



Noder: Data wedi ei gipio ar raddfa 1:2,500 ac a ddangos ar 1:360,000.
Mae mapiau graddfa-fawr swyddodol ar gael gan CNC.
Mae graddfa'r map yn cywir pan argraffu yn A3.

Note: Data captured at 1:2500 scale and shown at 1:360,000.
A definitive large scale map is available on request from NRW.
The scale of this map is only correct when printed out at A3.

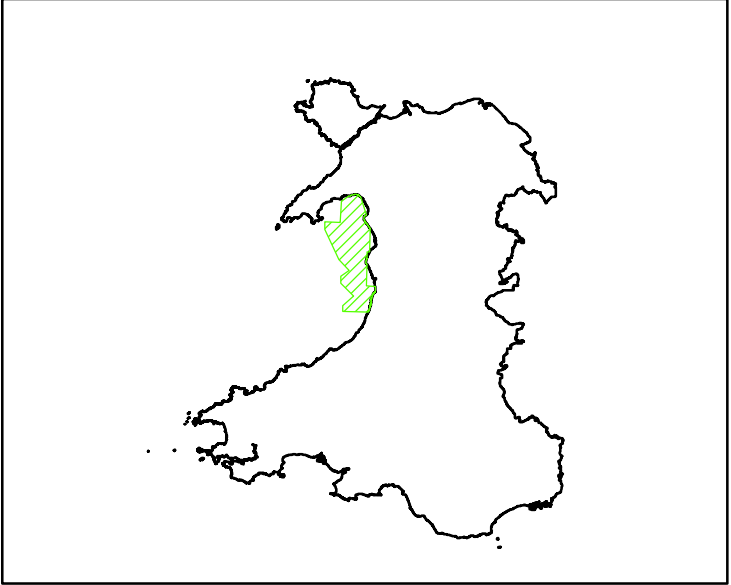
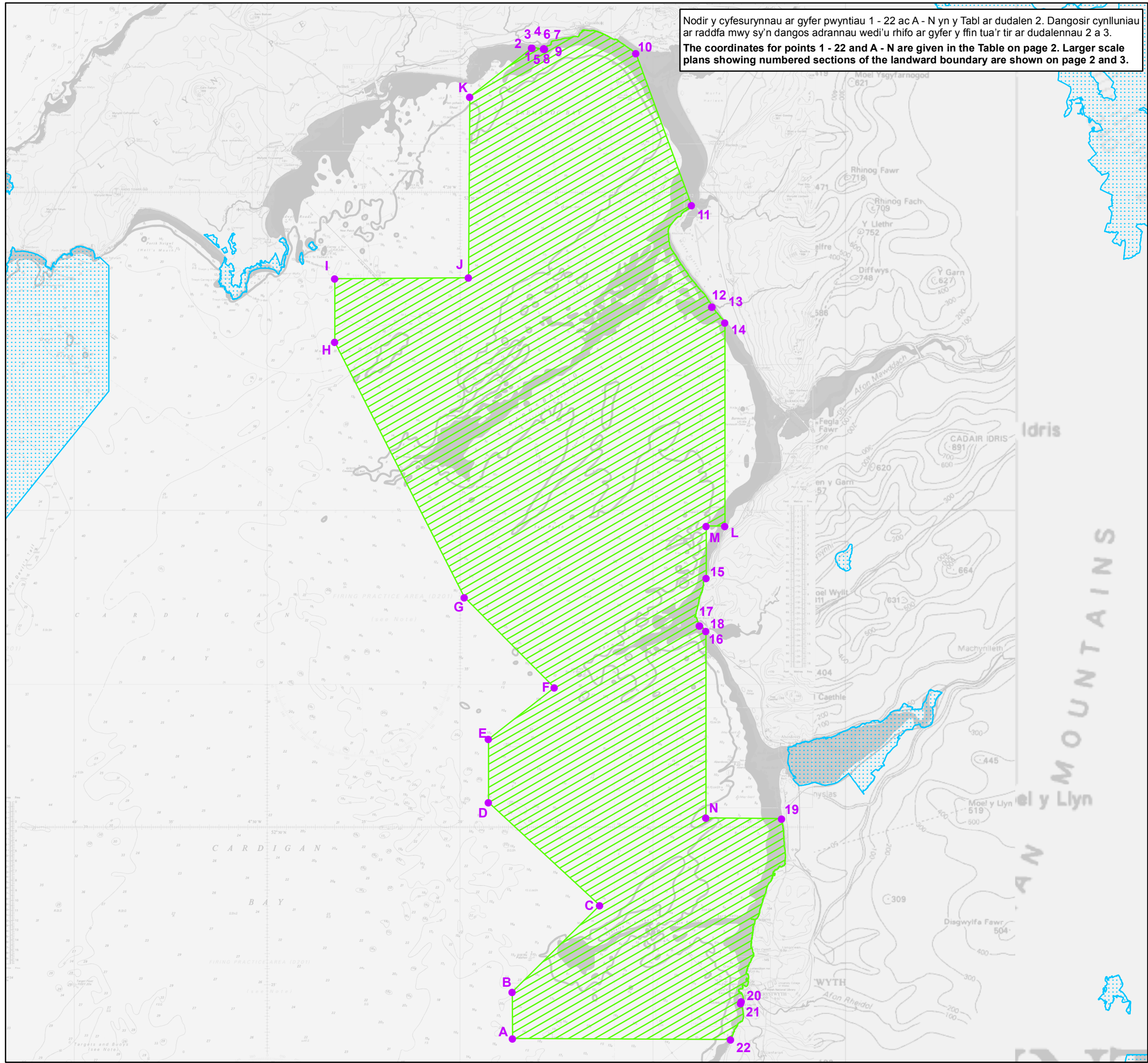
Noder: Gall y ffin newid lle mae'n dilyn llinell Marc Penllanw Cymhedrol ac/neu llinell Marc Distyll Cymhedrol.

Note: Where the boundary follows the lines of Mean High and/or Mean Low Water Marks it is subject to change.

© Coron Prydeinig ac Oceanwise Cyf. Cedwir pob hawl. Rhif trwydded EK001-20120402
RHAID PEIDIO Â DEFNYDDIO HWN AR GYFER LLYWIO
© British Crown and Oceanwise Ltd. All rights reserved. Licence No. EK001-20120402
NOT TO BE USED FOR NAVIGATION

© Hawfaint y Goron a hawliau cronfa ddata 2015 Arolwg Ordnans 10009741.
© Crown Copyright and database rights 2015 Ordnance Survey 10009741.

Nodir y cyfesurynnau ar gyfer pwyntiau 1 - 22 ac A - N yn y Tabl ar dudalen 2. Dangosir cynlluniau ar raddfa mwy sy'n dangos adrannau wedi'u rhifo ar gyfer y ffin tua'r tir ar dudalennau 2 a 3.
The coordinates for points 1 - 22 and A - N are given in the Table on page 2. Larger scale plans showing numbered sections of the landward boundary are shown on page 2 and 3.



Northern Cardigan Bay / Gogledd Bae Ceredigion

Ardal Gwarchodaeth Arbennig arfaethedig (AGAA)
potential Special Protection Area (pSPA)

Gweler drosodd am fap
See overleaf for map

Tudalen 2/3
Page

Pwynt	Hydred	Lledred	X	Y
Point	LONGITUDE	LATITUDE	X	Y
A	-4.2878	52.3881	244325	279182
B	-4.2883	52.4129	244385	281938
C	-4.2127	52.4586	249676	286859
D	-4.3088	52.5128	243346	293090
E	-4.3088	52.5461	243465	296793
F	-4.2519	52.5734	247416	299705
G	-4.3297	52.6208	242316	305147
H	-4.4416	52.7548	235249	320294
I	-4.4416	52.7881	235375	323997
J	-4.3261	52.7885	243163	323791
K	-4.3250	52.8833	243574	334327
L	-4.1043	52.6584	257687	308854
M	-4.1206	52.6584	256588	308887
N	-4.1210	52.5047	256059	291795
1	-4.2713	52.9087	247275	337042
2	-4.2713	52.9088	247280	337045
3	-4.2712	52.9088	247287	337050
4	-4.2711	52.9089	247289	337052
5	-4.2711	52.9089	247292	337054
6	-4.2612	52.9083	247954	336965
7	-4.2607	52.9084	247990	336975
8	-4.2604	52.9083	248006	336971
9	-4.2601	52.9083	248025	336971
10	-4.1813	52.9059	253318	336535
11	-4.1332	52.8264	256289	327594
12	-4.1157	52.7734	257298	321667
13	-4.1154	52.7732	257312	321646
14	-4.1044	52.7651	258027	320724
15	-4.1207	52.6310	256494	305847
16	-4.1263	52.6060	256031	303080
17	-4.1261	52.6058	256046	303049
18	-4.1207	52.6030	256397	302726
19	-4.0554	52.5043	260506	291630
20	-4.0902	52.4079	257839	280972
21	-4.0907	52.4066	257795	280827
22	-4.0995	52.3878	257141	278754

Ac eithrio pan nodir yn wahanol, mae ffin yr AGA bosibl yn dilyn y Marc Distyll Cymedrig rhwng y pwyntiau canlynol:

- 1 a 2
- 3 a 4
- 5 a 6
- 7 a 8
- 9 a 10
- 11 a 12
- 13 a 14
- 15 a 16
- 17 a 18
- 19 a 20
- 21 a 22.

Except where otherwise shown, the boundary of the potential SPA follows Mean Low Water Mark between the following points:

- 1 and 2
- 3 and 4
- 5 and 6
- 7 and 8
- 9 and 10
- 11 and 12
- 13 and 14
- 15 and 16
- 17 and 18
- 19 and 20
- 21 and 22.

 Ardal Gwarchodaeth Arbennig arfaethedig (AGAA)
potential Special Protection Area (pSPA)

Dangosir y pwyntiau wedi'u rhifo yn y mapiau mewnol canlynol ar y prif fap ar dudalen 1.
The numbered points in the following inset maps are shown on the main map on page 1.

