



**Cyfoeth
Naturiol
Cymru**
**Natural
Resources
Wales**

Town Tree Cover in Wrexham County Borough

Understanding canopy cover to better plan and manage our urban trees



Foreword



Emyr Roberts



Diane McCrea

Introducing a world-first for Wales is a great pleasure, particularly as it relates to greater knowledge about the hugely valuable woodland and tree resource in our towns and cities.

We are the first country in the world to have undertaken a country-wide urban canopy cover survey. The resulting evidence base set out in this supplementary county specific study for Wrexham County Borough will help all of us - from community tree interest groups to urban planners and decision-makers in local authorities and our national government - to understand what we need to do to safeguard this powerful and versatile natural asset.

Trees are an essential component of our urban ecosystems, delivering a range of services to help sustain life, promote well-being, and support economic benefits. They make our towns and cities more attractive to live in - encouraging inward investment, improving the energy efficiency of buildings – as well as removing air borne pollutants and connecting people with nature. They can also mitigate the extremes of climate change, helping to reduce storm water run-off and the urban heat island.

Natural Resources Wales is committed to working with colleagues in the Welsh Government and in public, third and private sector organisations throughout Wales, to build on this work and promote a strategic approach to managing our existing urban trees, and to planting more where they will deliver the greatest benefits.

Dr Emyr Roberts
Chief Executive

Diane McCrea
Chair



Cefnawr: © Crown Copyright: RCAHMW

Table of Contents

Foreword

- 1: Introduction – Wales’ canopy cover study**
- 2: Wrexham County Borough - county and town canopy cover findings**
- 3: Distribution, composition and change to canopy cover**
- 4: Neighbourhood canopy cover – a focus on Wrexham’s wards**
- 5: Potential for tree planting, a pilot exercise for Wrexham**
- 6: Conclusion: disseminating, refining and updating the data**

List of Figures

- Figure 1: Trees are powerful and versatile natural assets
- Figure 2: Wrexham County Borough’s urban areas with their 2013 canopy cover percentage
- Figure 3: Distribution of the 12 land-use categories (2013) across Wrexham’s urban areas
- Figure 4: The Percentage Contribution of Canopy Cover within each Land-Use
- Figure 5: Land-Use Canopy Cover Distribution within Wrexham County Borough’s Towns
- Figure 6: Wrexham County Borough’s Urban Woodland and Amenity Tree Canopy Cover % - 2013
- Figure 7&8: Spatial Distribution of Woodland and Amenity Trees within Towns
- Figure 9: Extent of Woodland and Amenity Tree Coverage (ha) across Wrexham County Borough’s Towns
- Figure 10: Percentage Distribution of Amenity Tree and Woodland Cover across the Land-Uses
- Figure 11&12: Town Ward by Ward Canopy Cover Breakdown
- Figure 13: Canopy Cover in ‘Wrexham’s Urban Villages’ Communities First Cluster Area
- Figure 14: Canopy Cover in ‘Caia Park and Hightown’ Communities First Cluster Area
- Figure 15: Wrexham’s canopy cover and green areas with potential to explore new planting
- Figure 16: Wrexham’s potential canopy cover per land-use

List of Tables

- Table 1: Town size and canopy cover
- Table 2: Canopy cover within each land-use for the seven towns
- Table 3: Land-use distribution of canopy cover within wards (LSOAs)
- Table 4: The highest and lowest ‘woodland’ cover within Wrexham County Borough’s Communities First Cluster Area wards (LSOAs)
- Table 5: Town amenity tree loss and gain between 2006, 2009 & 2013
- Table 6: Town woodland loss and gain between 2011 and 2014
- Table 7: Summary breakdown of town amenity tree and woodland cover in 2006, 2009 and 2013
- Table 8: Distribution of Wrexham County Borough’s wards (LSOAs) as per the Welsh Index of Multiple Deprivation 2011
- Table 9: ‘Top10’ most canopied wards
- Table10: ‘Bottom 10’ least canopied wards
- Table11: Ward by Ward (LSOAs) Canopy Cover
- Table 12: The potential to increase canopy cover in Wrexham by assessing green space without trees.



Caia Park, Wrexham: Canopy cover is particularly low in this less advantaged neighbourhood. Opportunities do however exist to increase cover over time. This photo was taken from the three hectares of community woodland planted in 2012 as part of the Welsh Government's 'Plant!' initiative.

Acknowledgements

Fryer, Dafydd CMLI (NRW) Urban Forest Architect – Main Author

Natural Resources Wales (NRW) would especially like to thank the following people:

Anglezarke, Barbara, (NRW) Communities and Regeneration Team Leader

GIS & Spatial Services Team (NRW)

Hume, David, AECOM (TCWTC Phase 3 Consultants)

Jaluzot, Anne, Green Infrastructure Planning Consultant

Lush, Claire, Exegesis SDM (TCWTC Phase 1 Consultants)

Negi, Poonam, RMSI (TCWTC Phase 2 Consultants)

Special thanks go to the Welsh Government for funding Phase 3 and Richard Morgan from the Welsh Government's Forestry Policy Team, Land, Nature and Forestry Division.

.....

2006 COWI Aerial Photography licensed to Natural Resources Wales through Welsh Government Pan Government Agreement.

2009 Aerial Photography licensed to Forestry Commission through Pan Government Agreement, from England/Wales Next Perspectives™.

2013-14 Aerial Photography: © Airbus Defence & Space and Getmapping. Reproduced by permission of Welsh Government (Rural Payments Wales) – 03 / 2016.

Reproduced by permission of Ordnance Survey on behalf of HMSO. © Crown copyright and database right [2013], all rights reserved. Natural Resources Wales Ordnance Survey licence number [100021974]

Point X Copyright © and Database Rights 2013 Point X Ltd and Landmark Information Group. Ordnance Survey Crown Copyright 2013. All Rights Reserved.

Photography credits:

All oblique aerial photography licensed to Natural Resources Wales from Royal Commission on the Ancient and Historic Monuments of Wales (RCAHMW). © Crown copyright, Natural Resources Wales' RCAHMW licence number [RCPL2/3/46/037]

Images - Moray Simpson (©M Simpson), Dafydd Fryer (©NRW), Elton Watson (©WCBC)

.....

Published by: Natural Resources Wales, Welsh Government Offices, Rhodfa Padarn, Llanbadarn Fawr, Aberystwyth, Ceredigion, SY23 3UR

The updated national 'Tree Cover in Wales' Towns and Cities' report and associated summary are available online at the Natural Resources Wales website.

For further information:

Email – urbantrees@naturalresourceswales.gov.uk

1. Introduction – Wales’ canopy cover study

The ‘Tree Cover in Wales’ Towns and Cities’ study is the first nationwide study of a whole country’s urban area to be undertaken anywhere in the world. To compliment this 22 county reports provide specific local focus to the canopy cover findings. For Wrexham County Borough this offers details for its 11 towns.

Start here to understand the context, objectives, audience, and future prospects of this work:

- 1.1 The economic, social and environmental value of trees in our towns
- 1.2 Why a ‘Tree Cover in Wales’ Towns and Cities’ (TCWTC) Study?
- 1.3 Who is this study for?
- 1.4 How was the study developed? An overview
- 1.5 A portrait of Wales’ and Wrexham County Borough’s urban tree canopy
- 1.6 The way ahead. What we can all do



The 'Tree Cover in Wales' Towns and Cities' study – providing the context for Wrexham County Borough's canopy cover findings

1.1 The economic, social and environmental value of trees in our towns

It is now widely accepted that trees and woodlands in and around towns and cities have a vital role to play in promoting sustainable communities. In the last few years a growing body of research has demonstrated that trees bring a wide range of benefits both to individual people and to society as a whole.

As the most important single component of green infrastructure, trees can contribute to improved health and wellbeing, increased recreational opportunities, and an enriched and balanced environment that ultimately boosts a town's image and prosperity.

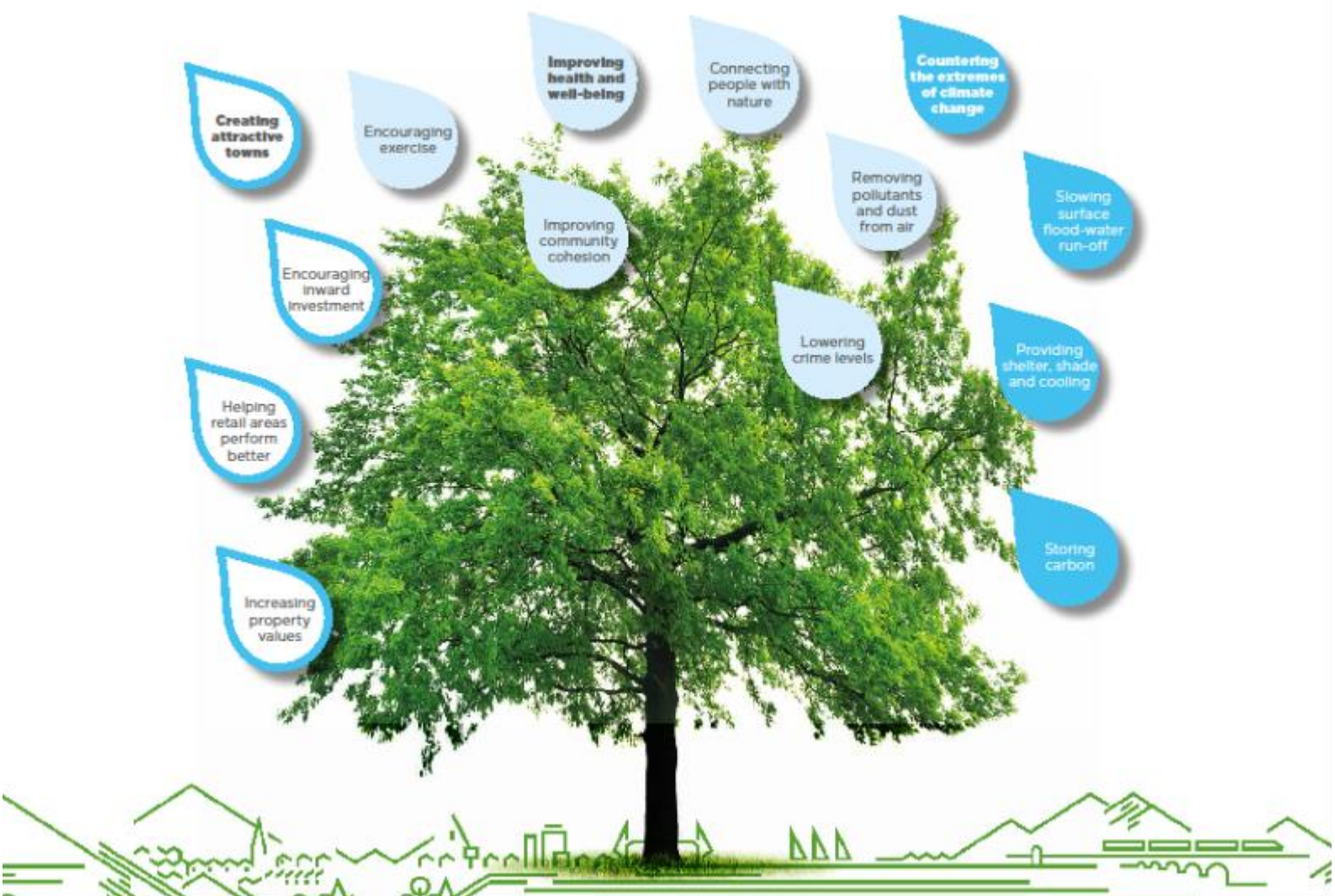


Figure 1: Trees are powerful and versatile natural assets

1.2 Why a 'Tree Cover in Wales' Towns and Cities' (TCWTC) Study?

Trees are a shared resource and are amongst the most versatile natural assets planners, policy makers, businesses and communities can use to cost effectively raise the quality of Welsh towns and cities.

In spite of this potential, very little is known about Wales' urban tree resource. Nobody knows how much there is, where it falls, and whether current provisions are adequate to effectively support the sustainable growth, health and wellbeing of Welsh urban communities. Despite their multi-purpose benefits to society the urban environment places considerable pressure on trees, with the reasons for their potential removal and loss of cover varied.

1.3 Who is this study for?

The Tree Cover in Wales' Towns and Cities (TCWTC) study was designed to help address this knowledge gap and **provide decision-makers around the country, including Wrexham County Borough Council, with the baseline information they need to strategically plan and manage Wales' urban tree resource.**

The TCWTC study makes a significant contribution to building understanding and capacity for effective national coordination of urban green infrastructure delivery. Its findings will be of interest to both policy makers and practitioners, particularly those in the Welsh Government, Natural Resources Wales and their Public Service Board representatives, local authorities such as Wrexham County Borough Council, Registered Social Landlords, e.g. Clwyd Alyn Housing Association and other significant land owners in urban areas, e.g. Dee Valley Water, University campuses and non-governmental bodies.

This supplementary county report provides detailed findings in the form of maps, tables and charts and are presented in a similar format as to what is presented in the national TCWTC study sections. To gain a greater understanding behind the county results this report should be read in conjunction with the more detailed analysis found in the national study. Further analysis is needed to tease out the particular characteristics and trends of canopy cover within each county.

1.4 How was the study developed? An overview

Because it is mostly through their crown spread that trees deliver benefits, the TCWTC study focuses on tree canopy cover (rather than counting individual number of trees). This was mapped through a desk-based analysis of 2006, 2009 and 2013 aerial photographs for Wales' 220 urban areas as defined by the Office of National Statistics' settlement based approach.

Wales is the first country in the world to undertake a complete canopy cover study of all its urban areas.

The findings of non-woodland 'amenity' trees were complemented by existing datasets on urban woodland (>0.5 hectares), using National Forest Inventory data. The analysis conducted at multiple scales (county, town and ward level) also considered the relation between canopy cover and local levels of deprivation.

1.5 A portrait of Wales' and Wrexham County Borough's urban tree canopy

Urban canopy coverage

Wales' mean urban tree cover was estimated to be 16.3% for 2013, down from 17.0% in 2009. Wrexham's urban cover was estimated to be 17.4% in 2013, up from 17.0% in 2009 – one of only two counties to record an increase in canopy along with neighbouring Flint.

High differences from town to town

Behind national figures, landscape character influences the noticeable differences that exist - often low in coastal towns (e.g. Rhyl and Porthcawl – 6%) and high in the South Wales Valleys (e.g. 30% in Treharris). Eight of the 11 towns display more cover than the national average. Brymbo, Cefnawr, Llay and Gresford are all in excess of 20% - towns reflecting certain characteristics of the 'Valleys'. Coedpoeth (7.5%) however stands out as the under-provided for town in the county.

Nationally one third urban woodland, two thirds amenity trees

Urban woodlands represent 35% of Wales' urban canopy cover, however in Wrexham it rises to 41%. The rest is made up of so-called 'amenity' non-woodland trees, those individual and groups of trees growing along streets, gardens, car parks and other urban public and private open spaces.

Distribution of canopy amongst land uses tells a great deal about urban tree stewardship

Public open space hosts 53% of all tree cover in our Welsh communities despite making up only 22% of urban land. This is 56% in Wrexham, where public open space accounts for 24% of urban land.

Private residential gardens make up 35% of Wales' urban areas and provide 20% of all our town's tree cover. This is 40% in Wrexham with gardens providing 21% of all canopy. This underlines the responsibility of homeowners, and the importance of the good use and management of tree preservation orders to the upkeep of the Welsh urban forest. It also highlights the responsibility of developers and planners as part of the development process to ensure our housing areas are all adequately canopied.

Transport routes - including verges and pavements - make up 16% of Wales' urban land but they only provide 9% of cover, similar to Wrexham. Motorised traffic causes much of the urban air and surface water pollution, which trees have the ability to remove.

Tree canopy loss

Overall Wrexham gained 15 hectares between 2009 and 2013 with eight of the 11 towns recording an increase. In contrast 159 of Wales' 220 urban areas showed a decline in canopy during this period. When comparing loss and gain of trees between 2006 and 2013, 7,000 large trees appear to have been lost across Wales – with 483 in Wrexham, which appears to go against the positive canopy gains. The overall national picture suggests a steady erosion of Wales' Victorian and Edwardian tree legacy.

Tree cover in deprived areas tends to be lower and relatively less rich in amenity trees

Whilst variation exists across Wales, 63% of more affluent wards have cover greater than 15% compared to 23% for less well-off wards. There is however great variation in tree cover within Wales' top 10 most deprived wards (2014), from as little as 2% in Rhyl West 2 to 19% in Merthyr Vale 2, Aberfan. The two Communities First cluster areas do differ in the degree of canopy provision. In 'Caia Park and Hightown', apart from Hermitage 2 (27%), the remaining eight wards (LSOAs) all display relatively low cover - 5% (Wynnstay) to 13%. Seven of nine 'Wrexham's Urban Villages' wards fall below the national average – Gwersyllt N 2 on 9%, the least canopied. Where high tree cover and

high level of deprivation coexist, this seems to be associated with local urban woodland being present rather than amenity trees. Woods of this nature can sometimes be unmanaged and inaccessible.

Potential for tree cover

'Green land' sites (soil, grass and shrub areas) were assessed for potential planting, piloting one major town in each local authority, e.g. Wrexham itself.

If all 'green land' sites identified were planted, with the right trees in the right places, cover in towns could potentially increase by 42%.

Knowing where trees might be planted enables planners to set realistic canopy cover targets. Many North American and Australian cities have comprehensive tree strategies with tree canopy cover goals. Portland in Oregon, with a similar climate to Wales, intends to increase its cover by 7% from its current level of 26%. Bristol City Council has set an aspirational goal of increasing canopy cover from 14% to 30%.

If Welsh towns with lower cover aimed for 20% (the UK Forest Standard woodland definition) in the medium term – we could have a nation of woodland towns!

1.6 The way ahead. What we can all do

Share and build the evidence

What gets measured gets managed. The study has addressed a significant information gap. It's crucial that we continue to share findings and continue the research.

Adopting a strategic approach to managing our urban trees

The study has identified significant discrepancies in canopy cover levels between and within individual towns. International best practice shows that the best way to ensure all urban communities achieve adequate canopy cover is to adopt local tree strategies and set canopy cover targets.

Supporting sustainable urban tree management

Significant rates of tree loss have been identified. It's crucial that we all review the effectiveness and use of existing tools and legislation for tree care and preservation and ensure that the potential of grant programmes is maximised to support Wales' urban treescape.



Wrexham: Approaching from the south along the Ruthin and Bersham roads. Contrasting patterns of canopy cover are reflected in the variety of land-use present in the Offa and Erddig wards. © Crown Copyright: RCAHMW

2. Wrexham - County and town canopy cover findings

This section presents headline findings on canopy cover extent.

Facts, figures and conclusions are provided in the following sequence:

2.1 Wrexham County Borough's cover

2.2 Town canopy cover comparisons

2.3 Summary: actionable findings



2.1 Wrexham County Borough's cover

Wrexham County Borough's mean canopy cover for 2013 was estimated at 17.4%, totally 659 hectares – up from 17.0% in 2009.

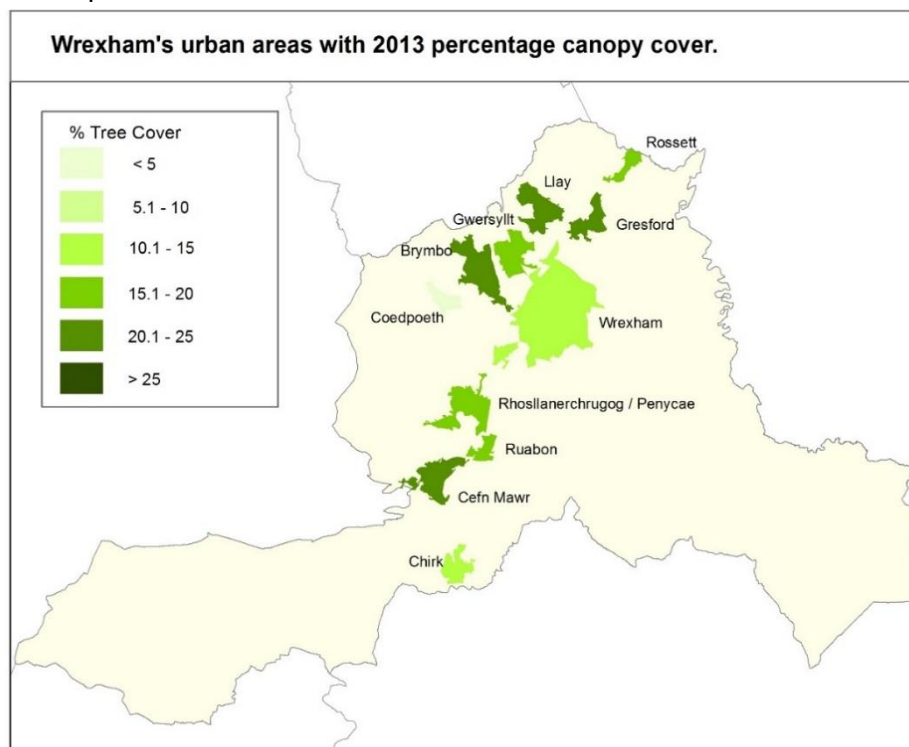


Figure 2: Wrexham County Borough's urban areas with their 2013 canopy cover percentage

2.2 Town canopy cover comparisons

Urban Area Size (ha) Category:

0 - 250	251-500	501-1000	1001-5000	>5000
---------	---------	----------	-----------	-------

Canopy Cover Size Classes:

0 - 5%	5.1 – 10%	10.1 -15%	15.1 -20%	20.1-25%	>25.1%
--------	-----------	-----------	-----------	----------	--------

National Area Size Rank	Urban Area	Landscape Character Zone	Population ONS 2011 Census	Urban Area (ha)	Total Cover '13 (ha)	Total Cover '13 (%)
14	Wrexham	North-East	44,711	1,471	207	14.1%
45	Brymbo	North-East	3,981	419	89	21.2%
57	Rhosllanerchrugog / Penycae	North-East	13,501	352	55	15.6%
69	Cefnmawr	North-East	7,051	303	74	24.4%
74	Llay	North-East	4,681	288	72	25.0%
77	Gwersyllt	North-East	10,677	268	47	17.5%
92	Gresford	North-East	5,010	192	47	24.5%
96	Chirk	North-East	4,007	172	24	14.0%
131	Coedpoeth	North-East	5,723	120	9	7.5%
150	Ruabon	North-East	3,357	103	17	16.5%
151	Rossett	North-East	2,007	103	18	17.5%

Table 1: Town size and canopy cover

2.3 Summary: actionable findings

Setting canopy cover targets

The review of experiences on the international stage demonstrates that adopting canopy cover targets helps to drive urban tree management. The national findings on mean canopy cover provide a useful benchmark for local planning authorities across the country to use in support of their local planning efforts.

Under the UK Forest Standard 20%, tree cover constitutes woodland. This could be applied to urban areas as to whether they attain 'woodland town' status.

Priority towns for adoption of a strategic approach to canopy cover increase

Apart from the number of people affected by low tree canopy provision, other factors to consider when identifying canopy cover needs include deprivation, air quality and flood issues.

- The low level of tree cover in Coedpoeth merits a planned approach to improve canopy provision for the future socio-economic well-being of the town.

The ward-level analysis provides further insight where targeted tree planting might be needed. This is addressed in Section 4.

Optimising funding tools facilitating delivery

The strategic delivery of the canopy cover objectives set for a local area will be greatly facilitated if existing funding streams supporting the delivery of a high quality environment and infrastructure across urban Wales integrate tree-related measures as an eligible expenditure. For example: Vibrant and Viable Places, Coastal Communities Fund, Business Improvement District Fund Wales, Regional Transport Consortia Grant, Safe Routes in Communities, etc.

In line with this, NRW will ensure that its own grant schemes are open to urban tree and woodland proposals as far as possible.



Cefnmawr: Woodland makes a pronounced contribution to the 24% canopy cover. The view from above Acrefair looks across the now cleared chemical works to the Rhosymedre and Cefn woods beyond the clearly defined urban boundary.

© Crown Copyright: RCAHMW

3. Distribution, composition and change to canopy cover

This section focuses on the distribution, composition and changes to Wrexham County Borough's urban forest. It considers:

- 3.1 Urban canopy cover distribution across land-uses
- 3.2 Balance between urban woodland and amenity trees
- 3.3 Monitoring the extent of urban tree canopy over time - losses and gains
- 3.4 Summary – actionable findings

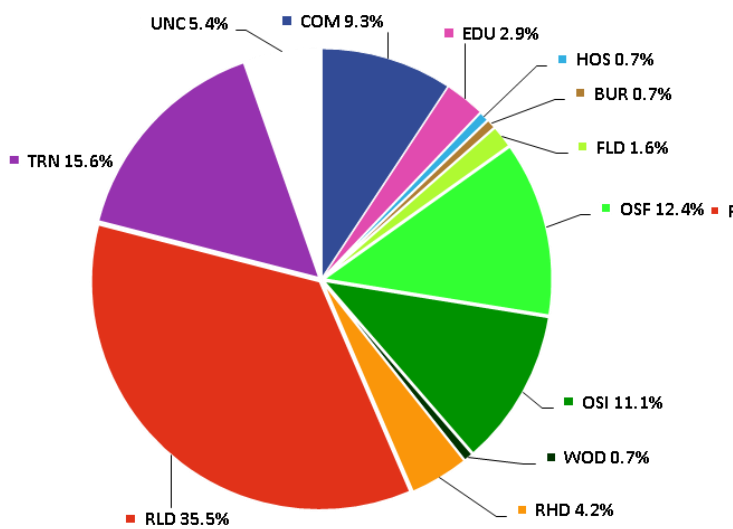


3.1 Urban canopy cover distribution across land-uses

Land Use Category	Total Land-use: hectares	TCWTC 2013 Canopy Cover : hectares
Commercial Areas (COM)	351.49	47.25
Education (EDU)	108.26	11.30
Hospitals (HOS)	27.9	4.22
Burial (BUR)	26.26	5.32
Remnant Countryside (FLD)	61.14	6.77
Formal Open Space (OSF)	469.96	101.84
Informal Open Space (OSI)	420.74	243.32
Woodland (WOD)	26.13	26.13
High Density Residential (RHD)	159.60	5.50
Low Density Residential (RLD)	1346.08	135.43
Transport Corridors (TRN)	592.56	60.38
Un-Classified Land-Use (UNC)	203.90	11.50
TOTAL	3794.04	658.95

Table 2: Canopy cover within each land-use for the 11 towns

Wrexham land-use 2013



Wrexham canopy cover per land-use 2013

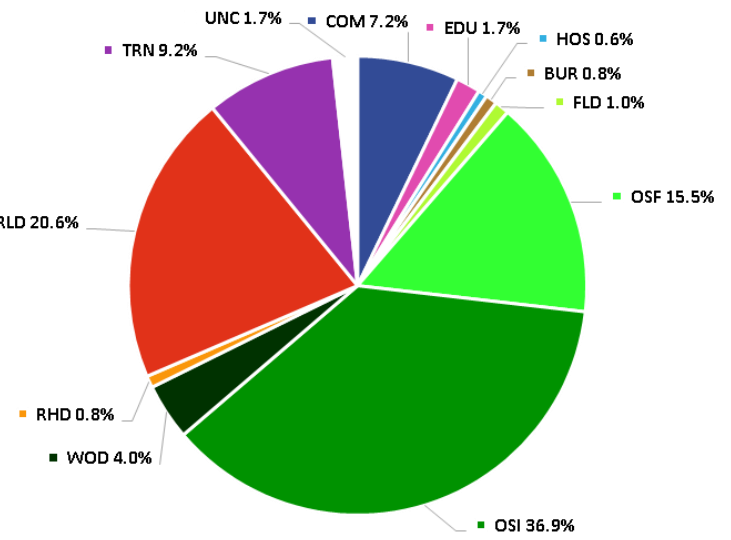


Figure 3: a) Distribution of the urban land-use categories and, b) canopy cover percentage breakdown per land-use (2009) across Wrexham County Borough's 11 towns.

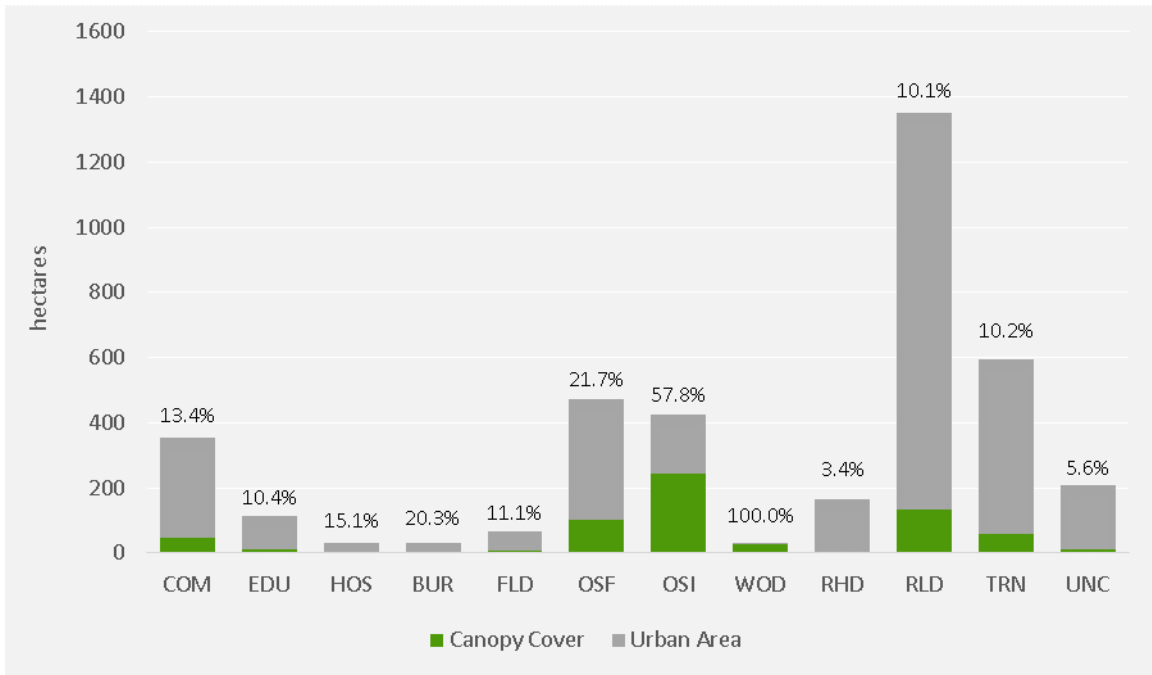


Figure 4: The Percentage Contribution of Canopy Cover within each Land-Use

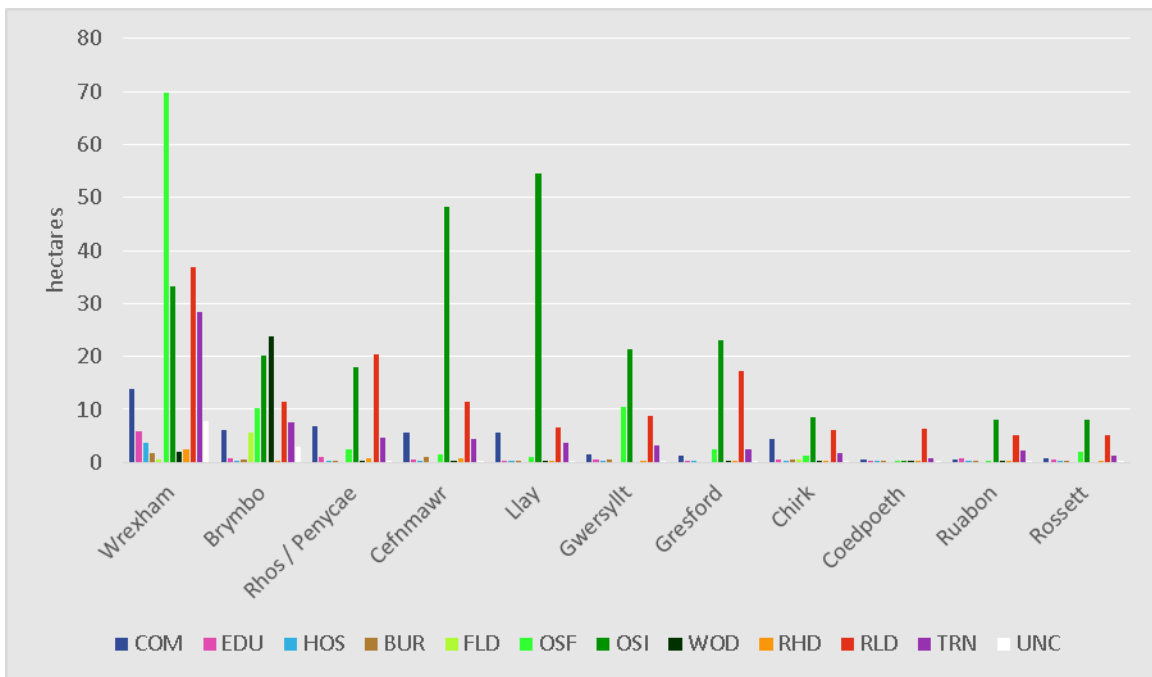


Figure 5: Land-Use Canopy Cover Distribution within Wrexham's Towns

Land-use distribution of canopy cover within wards (LSOAs)

WIMD  1 - 190 190 - 380 380 - 570 570 - 950 950 - 1896

Ward (LSOA) with WIMD (Cluster Area Ward highlighted)	Total Ward Area (ha)	Town Area in ward (ha)	COM (ha)	EDU (ha)	HOS (ha)	BUR (ha)	FLD (ha)	OSF (ha)	OSI (ha)	WOD (ha)	RHD (ha)	RLD (ha)	TRN (ha)	UNC (ha)	Total Cover TCWTC 3 (ha)
Brymbo															
Brymbo 1	641.85	138.29	5.72	0.13	0.24	0.08	2.40	4.59	5.18	16.26	0.03	1.90	3.65	0.77	40.94
Brymbo 2	59.17	34.00	0.00	0.05	0.00	0.00	0.19	1.78	1.11	0.19	0.04	0.98	0.47	0.20	5.00
Bryn Cefn	208.39	125.64	0.11	0.23	0.00	0.36	2.98	1.48	11.84	4.17	0.04	4.90	1.43	0.84	28.37
Gwenfro	89.42	41.50	0.01	0.00	0.00	0.05	0.00	1.39	0.94	0.51	0.06	0.82	0.86	0.25	4.88
New Broughton 1	115.55	42.71	0.35	0.24	0.00	0.00	0.14	0.65	0.79	0.86	0.07	1.23	0.57	0.71	5.63
New Broughton 2	56.31	36.88	0.00	0.11	0.00	0.00	0.00	0.24	0.29	1.82	0.07	1.50	0.52	0.09	4.66
Cefnmawr															
Cefn 1	544.48	74.46	2.59	0.17	0.00	0.68	0.00	0.01	11.50	0.03	0.08	3.74	0.83	0.10	19.74
Cefn 2	87.25	87.22	1.16	0.34	0.01	0.37	0.00	1.17	13.32	0.03	0.11	2.89	1.20	0.11	20.71
Cefn 3	130.89	40.17	0.04	0.07	0.04	0.00	0.00	0.15	4.52	0.00	0.07	2.00	0.46	0.01	7.37
Llangollen 3	1327.42	0.93	0.00	0.00	0.00	0.00	0.00	0.00	0.13	0.00	0.00	0.04	0.00	0.00	0.17
Llangollen Rural	532.82	47.08	1.50	0.00	0.00	0.00	0.00	0.03	11.94	0.02	0.05	1.90	0.69	0.01	16.15
Penycae and Ruabon South 1	1427.77	14.37	0.39	0.00	0.00	0.00	0.00	0.00	3.00	0.00	0.00	0.37	0.74	0.02	4.53
Plas Madoc	41.58	38.52	0.03	0.01	0.00	0.00	0.00	0.07	3.78	0.00	0.50	0.50	0.61	0.00	5.50
Chirk															
Chirk North 1	496.18	11.36	0.00	0.00	0.00	0.00	0.00	0.16	0.00	0.00	0.01	0.47	0.03	0.00	0.67
Chirk North 2	57.05	27.45	0.23	0.23	0.00	0.00	0.00	0.00	0.02	0.00	0.04	1.54	0.31	0.02	2.39
Chirk South	1355.55	132.79	4.19	0.36	0.02	0.45	0.63	1.15	8.41	0.00	0.05	4.23	1.33	0.05	20.86
Coedpoeth															
Coedpoeth 1	86.43	31.11	0.02	0.05	0.01	0.04	0.00	0.01	0.00	0.00	0.12	1.40	0.19	0.06	1.89

Ward (LSOA) with WIMD (Cluster Area Ward highlighted)	Total Ward Area (ha)	Town Area in ward (ha)	COM (ha)	EDU (ha)	HOS (ha)	BUR (ha)	FLD (ha)	OSF (ha)	OSI (ha)	WOD (ha)	RHD (ha)	RLD (ha)	TRN (ha)	UNC (ha)	Total Cover TCWTC 3 (ha)
Coedpoeth 2	64.11	32.27	0.02	0.00	0.00	0.13	0.00	0.09	0.15	0.00	0.02	1.49	0.12	0.00	2.02
Coedpoeth 3	385.73	38.59	0.08	0.00	0.01	0.00	0.00	0.29	0.00	0.01	0.06	3.09	0.35	0.01	3.89
Minera 1	983.62	18.14	0.36	0.00	0.00	0.00	0.00	0.00	0.01	0.00	0.00	0.44	0.08	0.00	0.90
Gresford															
Gresford East and West 1	107.58	37.50	0.02	0.00	0.05	0.00	0.00	0.29	2.38	0.00	0.03	2.33	0.29	0.00	5.40
Gresford East and West 2	488.41	50.57	0.81	0.10	0.00	0.00	0.00	1.82	1.80	0.08	0.12	3.04	0.73	0.04	8.53
Marford and Hoseley 1	71.87	61.78	0.38	0.04	0.00	0.00	0.00	0.25	18.05	0.01	0.03	5.95	0.75	0.00	25.48
Marford and Hoseley 2	241.89	41.72	0.08	0.00	0.00	0.00	0.00	0.24	0.83	0.00	0.06	6.00	0.60	0.01	7.82
Rossett 2	1416.89	0.80	0.00	0.00	0.00	0.00	0.00	0.00	0.10	0.00	0.00	0.03	0.09	0.00	0.22
Gwersyllt															
Gwersyllt East and South 1	57.79	42.27	0.04	0.00	0.00	0.00	0.00	1.70	4.52	0.00	0.05	1.29	0.58	0.01	8.19
Gwersyllt East and South 2	188.90	38.02	0.80	0.18	0.00	0.00	0.00	0.02	2.75	0.00	0.03	1.74	0.74	0.02	6.28
Gwersyllt East and South 3	151.58	70.58	0.03	0.00	0.00	0.00	0.00	8.51	10.72	0.00	0.01	0.84	0.33	0.00	20.38
Gwersyllt North 1	181.82	24.91	0.00	0.00	0.00	0.00	0.00	0.18	0.64	0.00	0.03	0.91	0.16	0.00	1.92
Gwersyllt North 2	42.57	39.28	0.51	0.24	0.06	0.49	0.00	0.05	0.34	0.00	0.06	0.81	0.85	0.01	3.38
Gwersyllt West 1	61.38	34.64	0.08	0.01	0.00	0.00	0.00	0.06	2.10	0.00	0.09	1.82	0.47	0.01	4.64
Gwersyllt West 2	103.61	18.53	0.00	0.00	0.00	0.00	0.00	0.09	0.13	0.00	0.01	1.28	0.20	0.00	1.72
Llay															
Llay 1	631.86	147.28	5.45	0.25	0.00	0.00	0.00	0.17	20.04	0.00	0.03	2.75	2.33	0.02	31.03
Llay 2	205.15	90.81	0.14	0.00	0.00	0.14	0.00	0.82	26.31	0.00	0.02	1.14	0.71	0.00	29.28
Llay 3	69.81	49.39	0.10	0.00	0.01	0.00	0.00	0.11	8.16	0.00	0.03	2.71	0.59	0.00	11.70
Rhosllanerchrugog / Penycae															
Johnstown 1	42.46	34.65	0.00	0.02	0.00	0.00	0.00	0.10	0.00	0.00	0.05	1.75	0.49	0.00	2.42
Johnstown 2	65.80	65.72	4.63	0.09	0.00	0.00	0.00	0.22	3.10	0.00	0.10	1.55	1.27	0.05	11.00
Pant	73.08	52.99	0.02	0.00	0.00	0.14	0.00	0.64	3.83	0.00	0.07	4.91	0.73	0.01	10.35

Ward (LSOA) with WIMD (Cluster Area Ward highlighted)	Total Ward Area (ha)	Town Area in ward (ha)	COM (ha)	EDU (ha)	HOS (ha)	BUR (ha)	FLD (ha)	OSF (ha)	OSI (ha)	WOD (ha)	RHD (ha)	RLD (ha)	TRN (ha)	UNC (ha)	Total Cover TCWTC 3 (ha)
Penycae	153.63	43.49	0.00	0.20	0.00	0.00	0.00	0.71	3.07	0.00	0.08	2.27	0.24	0.01	6.58
Penycae and Ruabon South 2	1755.81	27.93	0.03	0.01	0.00	0.07	0.00	0.02	3.58	0.01	0.03	1.87	0.35	0.00	5.97
Ponciau 1	502.84	53.21	0.40	0.01	0.00	0.14	0.00	0.70	2.38	0.00	0.15	5.07	0.41	0.02	9.28
Ponciau 2	338.88	29.97	0.57	0.00	0.00	0.00	0.00	0.05	0.02	0.00	0.14	1.09	0.23	0.02	2.12
Ponciau 3	1024.25	31.43	0.10	0.82	0.00	0.00	0.00	0.00	0.14	0.00	0.08	1.52	0.15	0.00	2.80
Ruabon 1	672.53	1.94	0.26	0.00	0.00	0.00	0.00	0.00	0.00	0.00	0.00	0.00	0.45	0.00	0.71
Ruabon 2	215.86	10.36	0.83	0.00	0.00	0.00	0.00	0.00	1.81	0.00	0.10	0.36	0.27	0.02	3.37
Rossett															
Rossett 1	1137.91	74.45	0.42	0.37	0.01	0.00	0.00	1.38	7.34	0.00	0.03	2.74	0.61	0.01	12.99
Rossett 2	1416.89	28.25	0.28	0.28	0.00	0.14	0.00	0.52	0.71	0.00	0.04	2.29	0.58	0.01	4.85
Ruabon															
Penycae and Ruabon South 1	1427.77	35.77	0.12	0.52	0.00	0.00	0.00	0.09	5.42	0.00	0.02	1.99	0.60	0.01	8.76
Ruabon 1	672.53	27.25	0.22	0.00	0.00	0.00	0.00	0.02	0.81	0.00	0.07	0.92	0.75	0.00	2.80
Ruabon 2	215.86	40.24	0.26	0.28	0.00	0.23	0.00	0.08	1.81	0.00	0.04	2.16	0.94	0.02	5.82
Wrexham															
Acton 1	57.25	57.25	0.05	0.09	0.00	0.00	0.00	9.28	0.00	0.00	0.12	1.32	0.96	0.07	11.89
Acton 2	31.62	31.62	0.00	0.13	0.00	0.00	0.00	0.49	0.00	0.00	0.10	1.03	1.33	0.06	3.15
Borras Park 1	27.77	27.30	0.00	0.00	0.00	0.00	0.00	0.95	0.00	0.00	0.00	1.52	0.23	0.01	2.71
Borras Park 2	32.74	31.41	0.00	0.15	0.00	0.00	0.00	0.62	0.30	0.00	0.01	1.06	0.86	0.01	3.00
Brynyffynnon 1	173.12	84.37	2.73	0.60	0.88	0.00	0.03	1.46	1.93	0.33	0.03	1.10	2.89	0.87	12.83
Brynyffynnon 2	73.08	73.08	1.20	0.55	1.08	0.00	0.00	2.00	0.20	0.00	0.13	0.38	1.20	0.31	7.04
Cartrefle 1	19.94	19.94	0.00	0.00	0.00	0.00	0.01	0.14	0.00	0.00	0.00	1.04	0.14	0.11	1.45
Cartrefle 2	24.93	24.93	0.00	0.01	0.00	0.00	0.00	0.31	0.00	0.00	0.05	0.79	0.17	0.10	1.44
Erddig	90.85	90.52	0.24	0.29	0.72	0.00	0.00	3.58	9.89	0.05	0.12	3.79	1.39	0.16	20.24
Esclusham 1	42.55	39.40	0.34	0.02	0.05	0.00	0.00	0.19	1.34	0.00	0.06	0.85	0.36	0.03	3.23
Esclusham 2	177.93	28.71	0.36	0.01	0.00	0.13	0.00	0.08	0.99	0.04	0.03	1.21	0.43	0.03	3.30

Ward (LSOA) with WIMD (Cluster Area Ward highlighted)	Total Ward Area (ha)	Town Area in ward (ha)	COM (ha)	EDU (ha)	HOS (ha)	BUR (ha)	FLD (ha)	OSF (ha)	OSI (ha)	WOD (ha)	RHD (ha)	RLD (ha)	TRN (ha)	UNC (ha)	Total Cover TCWTC 3 (ha)
Garden Village	56.25	55.66	0.06	0.20	0.00	0.00	0.00	0.33	1.39	0.00	0.06	2.92	1.12	0.09	6.17
Gresford East and West 2	488.41	22.48	2.39	0.00	0.00	0.00	0.00	0.00	2.40	0.13	0.00	0.00	1.84	0.05	6.81
Grosvenor 1	18.43	18.43	0.30	0.00	0.00	0.00	0.00	0.19	0.07	0.00	0.13	0.91	0.24	0.06	1.91
Grosvenor 2	86.32	84.53	1.74	0.76	0.58	0.00	0.00	2.36	0.32	0.00	0.12	0.58	2.01	0.37	8.85
Gwersyllt East and South 2	188.90	38.84	0.65	0.00	0.00	0.00	0.00	0.84	0.25	0.01	0.02	0.81	1.86	0.19	4.63
Gwersyllt East and South 3	151.58	2.21	0.21	0.00	0.00	0.00	0.00	0.00	0.00	0.09	0.00	0.00	0.02	0.00	0.32
Hermitage 1	22.22	22.22	0.00	0.50	0.02	0.00	0.00	0.42	0.00	0.00	0.14	0.79	0.32	0.06	2.25
Hermitage 2	46.27	45.60	0.65	0.64	0.00	0.00	0.00	4.31	4.61	0.06	0.10	0.89	0.58	0.35	12.18
Holt 1	3733.74	55.00	0.00	0.00	0.00	0.00	0.40	1.86	0.43	0.00	0.01	0.72	0.50	0.79	4.71
Little Acton 1	27.50	26.55	0.00	0.00	0.00	0.00	0.00	0.14	0.06	0.00	0.01	1.22	0.78	0.05	2.26
Little Acton 2	25.39	25.39	0.01	0.00	0.00	0.00	0.00	0.13	0.00	0.00	0.01	1.60	0.13	0.02	1.90
Maesydre	67.79	67.79	0.41	0.55	0.00	0.00	0.00	1.54	0.00	0.00	0.04	3.09	1.68	0.28	7.59
Marchwiel 1	3463.58	43.31	0.00	0.00	0.00	0.00	0.00	25.25	0.31	1.14	0.00	0.03	0.49	0.30	27.52
New Broughton 1	115.55	1.93	0.00	0.00	0.33	0.00	0.00	0.00	0.00	0.00	0.00	0.00	0.13	0.01	0.46
Offa	79.66	79.64	0.99	0.30	0.00	1.68	0.00	4.48	4.63	0.19	0.18	1.76	1.89	0.68	16.79
Ponciau 1	502.84	9.11	0.17	0.00	0.00	0.00	0.00	0.00	0.99	0.00	0.00	0.00	0.56	0.00	1.72
Queensway 1	26.76	26.76	0.00	0.22	0.00	0.00	0.00	0.71	0.00	0.00	0.23	0.19	0.19	1.00	2.54
Queensway 2	21.55	21.55	0.00	0.00	0.00	0.00	0.00	0.37	0.00	0.00	0.13	0.50	0.32	0.01	1.33
Rhosnesni 1	48.66	48.66	0.00	0.34	0.00	0.00	0.00	0.45	0.00	0.00	0.04	1.65	0.30	0.20	2.97
Rhosnesni 2	25.89	25.35	0.00	0.00	0.00	0.00	0.00	0.32	0.00	0.00	0.01	0.71	0.26	0.03	1.34
Smithfield	57.52	57.52	0.93	0.00	0.08	0.00	0.00	1.50	0.40	0.00	0.30	0.50	0.35	0.69	4.76
Stansty	59.00	58.42	0.01	0.04	0.00	0.00	0.00	1.07	1.09	0.00	0.07	1.43	1.78	0.06	5.55
Whitegate 1	58.59	52.43	0.11	0.33	0.00	0.00	0.00	1.98	1.27	0.03	0.12	0.74	0.64	0.28	5.50
Whitegate 2	25.80	25.80	0.31	0.01	0.00	0.00	0.00	1.05	0.45	0.03	0.08	0.97	0.39	0.07	3.37
Wynnstay	47.12	47.12	0.00	0.11	0.00	0.00	0.00	0.73	0.00	0.00	0.02	0.79	0.15	0.50	2.30

Table 3: Land-use distribution of canopy cover within wards (LSOAs)

3.2 Balance between urban woodland and amenity trees

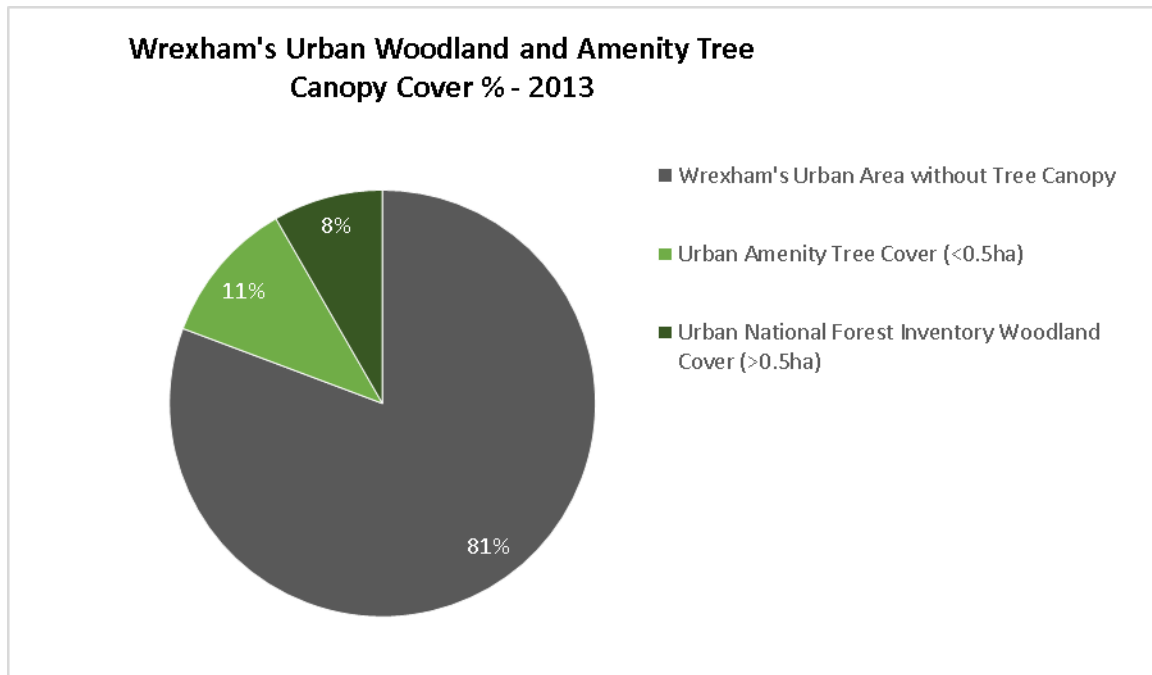


Figure 6: Wrexham's Urban Woodland and Amenity Tree Canopy Cover % - 2013



Acton, Wrexham

Spatial distribution of woodland and amenity trees within towns

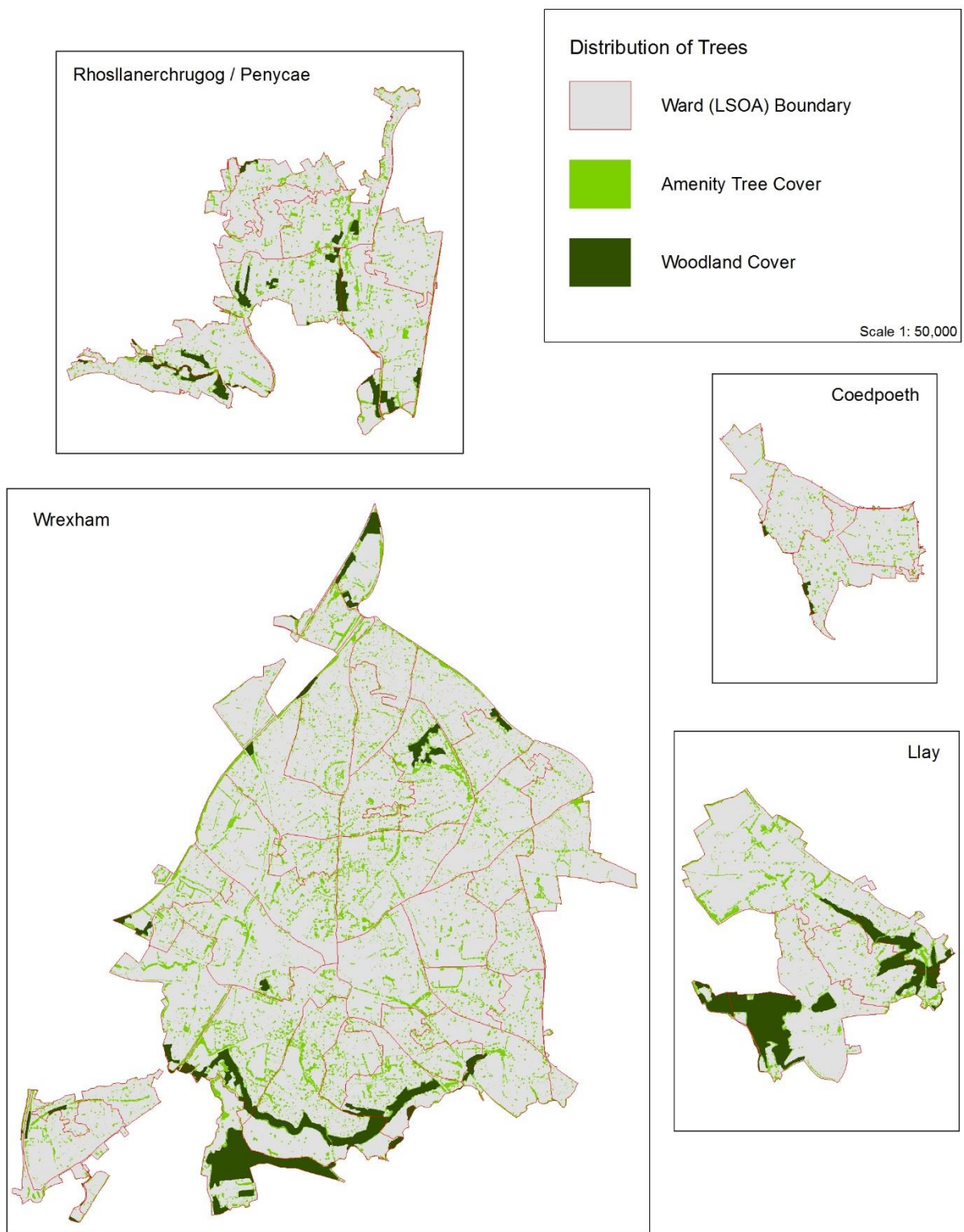


Figure 7: Wrexham town maps showing spatial distribution of woodland and amenity trees (1 of 2)

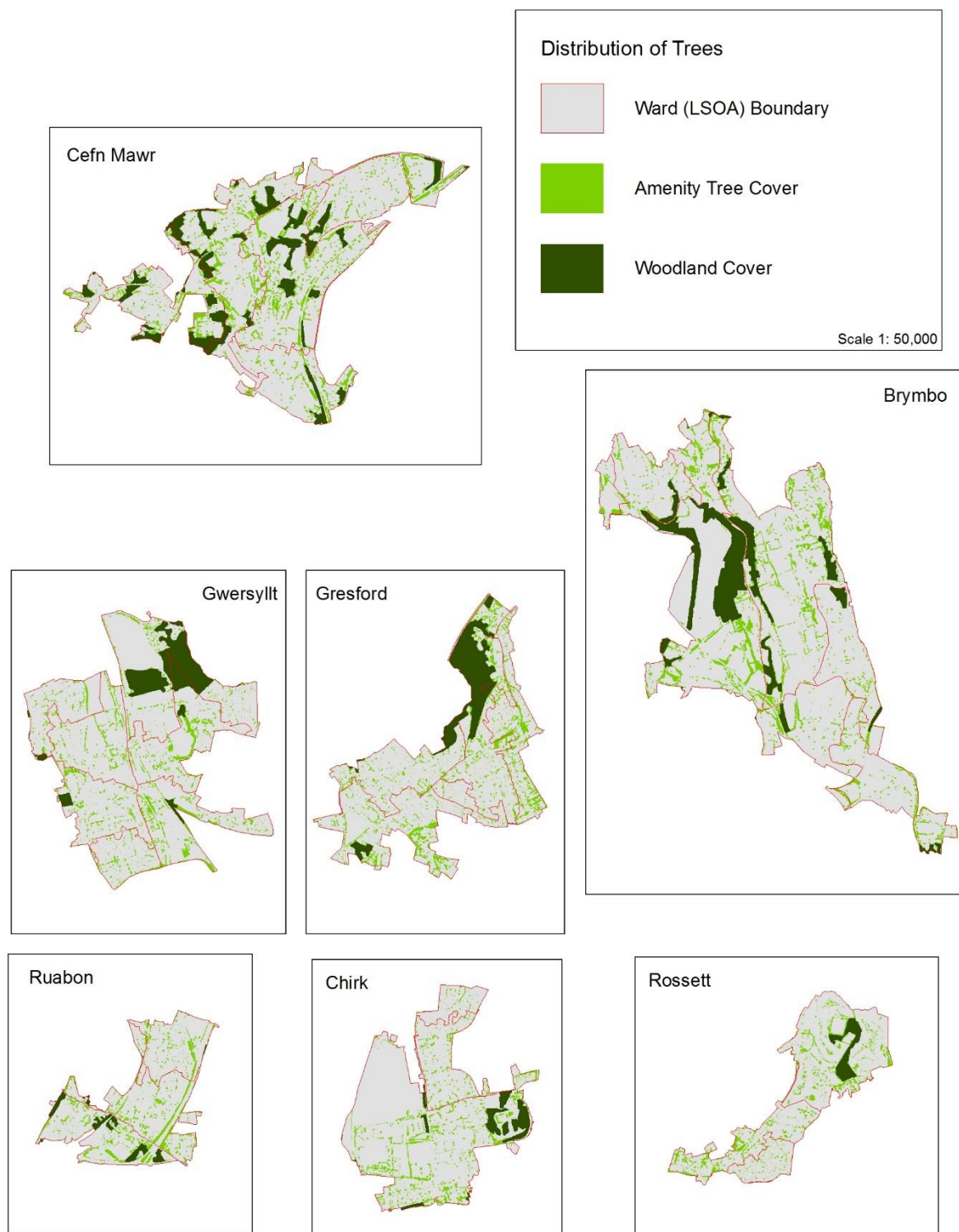


Figure 8: Wrexham town maps showing spatial distribution of woodland and amenity trees (2 of 2)

Extent of woodland and amenity tree coverage across Wrexham’s towns

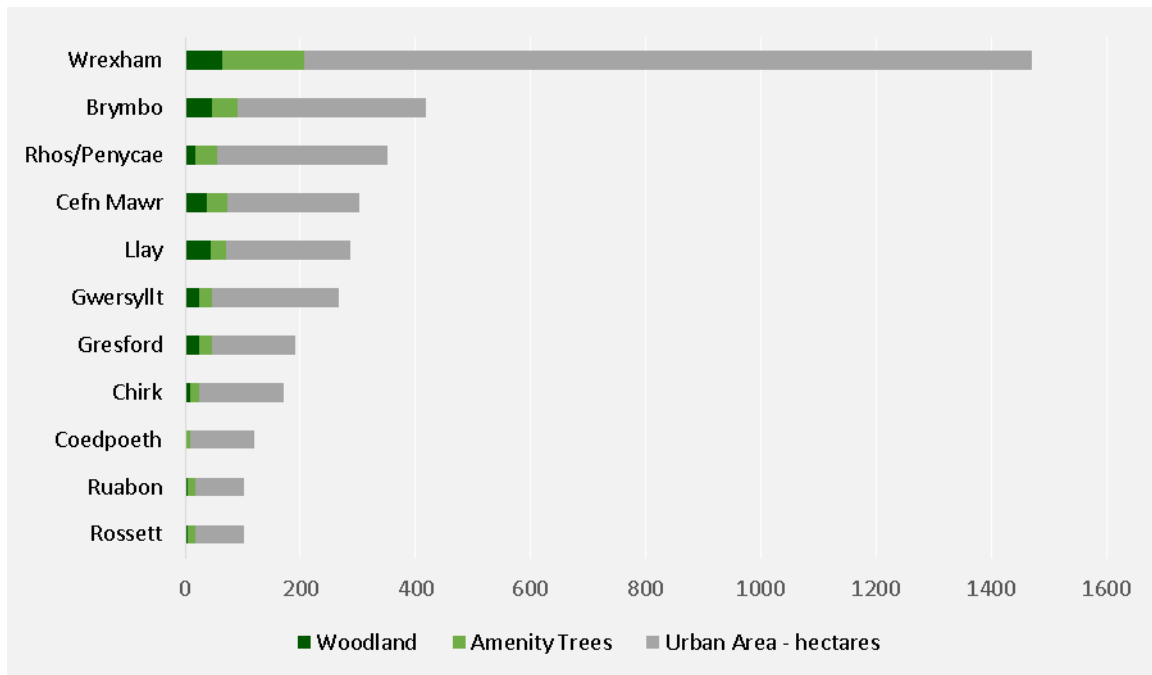


Figure 9: Extent of woodland and amenity tree coverage across Wrexham County Borough’s towns expressed as a proportion of the total urban area (hectares).

Land-use distribution of woodland vs. amenity canopy

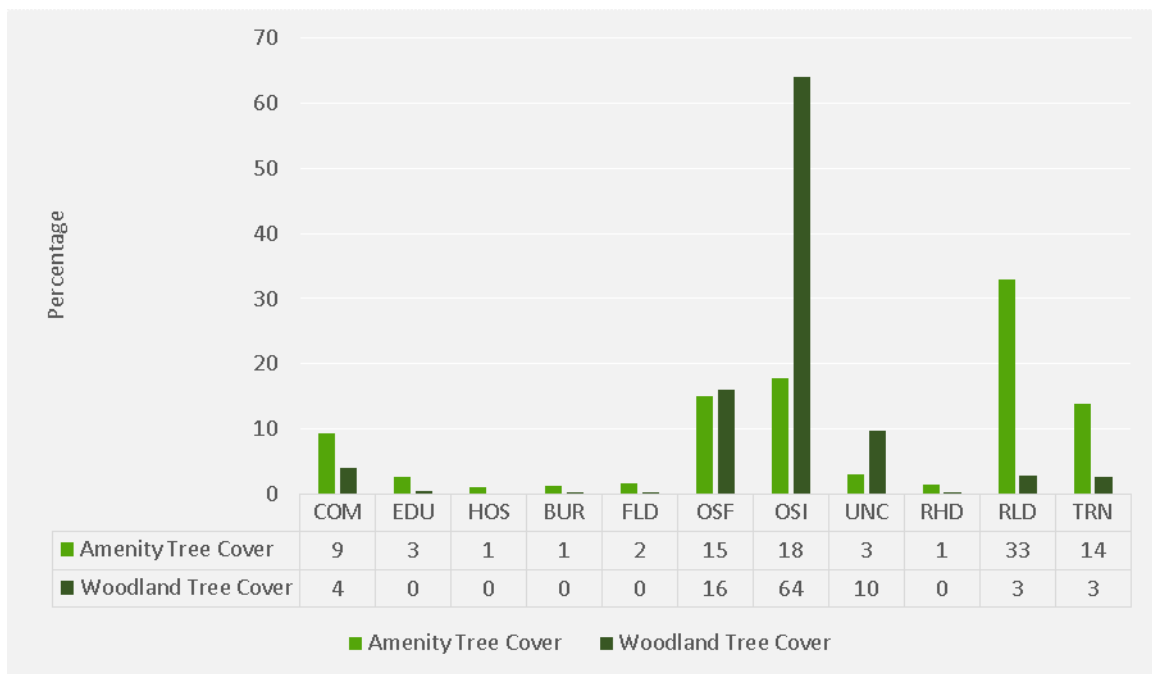


Figure 10: Land-use distribution of woodland (NFI) and amenity canopy cover (expressed as percentage of cover type across the different land-uses). UNC (Unclassified land-use) here includes both woodland (WOD) and amenity tree components).

Wards with high and low woodland (NFI) cover – making the distinction between ‘wooded’ and ‘amenity’ tree cover

Cluster Area Wards (LSOA)	Urban Area	‘Wooded’ %	‘Amenity’ Tree %	Total Canopy %
High ‘Wooded’ Wards				
Hermitage 2	Wrexham	54%	46%	26.7%
Llay 3	Llay	56%	44%	23.7%
Plas Madoc	Cefn Mawr	46%	54%	14.3%
Pant	Rhosllanerchrugog / Penycae	44%	56%	19.5%
Brymbo 2	Brymbo	40%	60%	14.7%
Cefn 3	Cefn Mawr	39%	61%	18.3%
Low ‘Wooded’ Wards				
Wynnstay	Wrexham	0%	100%	4.9%
Cartrefle 2	Wrexham	0%	100%	5.8%
Queensway 2	Wrexham	0%	100%	6.2%
Cartrefle 1	Wrexham	0%	100%	7.3%
Smithfield	Wrexham	0%	100%	8.3%
Gwersyllt North 2	Gwersyllt	0%	100%	8.6%
Queensway 1	Wrexham	0%	100%	9.5%

Table 4: The highest and lowest ‘woodland’ cover within Wrexham County Borough’s Communities First Cluster Area wards (LSOAs)

3.3 Monitoring the extent of urban tree canopy over time - losses and gains

Town	Amenity Tree Loss & Gain between 2006, 2009 & 2013						Change in Tree Count 2006 - 2009	Change in Tree Count 2009 - 2013	Change in Tree Count 2006 - 2013
	Large Trees 12m+ 2006 - 2009	Large Trees 12m+ 2009 - 2013	Medium Trees 6 - 12m 2006 - 2009	Medium Trees 6 - 12m 2009 - 2013	Small Trees 3 - 6m 2006 - 2009	Small Trees 3 - 6m 2009 - 2013			
Wrexham	-709	373	3642	963	17796	1161	20729	2497	23226
Brymbo	-274	65	-1539	963	15080	-1451	13267	-423	12844
Rhosllanerchrugog/ Penycae	-337	52	-1477	-154	12296	166	10482	64	10546
Cefn Mawr	16	88	-3060	247	13457	861	10413	1196	11609
Llay	42	52	619	696	-2794	473	-2133	1221	-912
Gwersyllt	40	21	1495	7	-6473	103	-4938	131	-4807
Gresford	-50	15	81	281	-5393	-329	-5362	-33	-5395
Chirk	23	56	-497	194	2352	-784	1878	-534	1344
Coedpoeth	-18	28	-432	147	56	-323	-394	-148	-542
Ruabon	11	38	-351	137	1036	-102	696	73	769
Rossett	-23	9	-1019	-5	4165	790	3123	794	3917
Change in Tree Numbers	-1279	797	-2538	3476	51578	565	47761	4838	52599

Table 5: Town amenity tree loss and gain between 2006, 2009 & 2013

Town	Area of NFI 2011 (ha)	Area of NFI 2014 (ha)	Change (ha)
Brymbo	45.91	43.40	-2.50
Cefnmawr	36.96	36.20	-0.76
Chirk	7.67	8.59	+0.92
Coedpoeth	1.19	1.19	0.00
Gresford	20.69	23.33	+2.65
Gwersyllt	24.44	22.64	-1.80
Llay	44.77	44.77	0.00
Rhosllanerchrugog / Penycae	18.35	18.35	0.00
Rossett	5.23	4.73	-0.50
Ruabon	4.63	4.63	0.00
Wrexham	61.92	63.74	+1.83
Wrexham County Borough	271.7	271.6	-0.17

Table 6: Town woodland loss and gain between 2011 and 2014

URBAN NAME	Area Size Rank	Survey Year	Urban Area (ha)	Woodland (ha)	Amenity Trees (ha)	Woodland %	Amenity Trees %	Woodland + Amenity Trees (ha)	Total Cover %
Brymbo	45	2006	419.0	45.9	34.5	11.0%	8.2%	80.4	19.2%
		2009	419.0	45.9	44.4	11.0%	10.6%	90.3	21.6%
		2013	419.0	43.4	46.1	10.4%	11.0%	89.0	21.2%
Cefnmawr	69	2006	302.8	37.0	33.2	12.2%	11.0%	70.1	23.2%
		2009	302.8	37.0	35.6	12.2%	11.8%	72.6	24.0%
		2013	302.8	36.2	38.0	12.0%	12.6%	74.0	24.4%
Chirk	96	2006	171.6	7.7	14.0	4.5%	8.1%	21.6	12.6%
		2009	171.6	7.7	14.9	4.5%	8.7%	22.6	13.2%
		2013	171.6	8.6	15.4	5.0%	8.9%	23.9	14.0%
Coedpoeth	131	2006	120.1	1.2	9.6	1.0%	8.0%	10.8	9.0%
		2009	120.1	1.2	6.8	1.0%	5.6%	8.0	6.6%
		2013	120.1	1.2	7.5	1.0%	6.3%	9.0	7.5%
Gresford	92	2006	192.4	20.7	33.4	10.8%	17.4%	54.1	28.1%
		2009	192.4	20.7	24.5	10.8%	12.8%	45.2	23.5%
		2013	192.4	23.3	24.1	12.1%	12.5%	47.1	24.5%
Gwersyllt	77	2006	268.2	24.4	24.8	9.1%	9.3%	49.3	18.4%
		2009	268.2	24.4	24.7	9.1%	9.2%	49.1	18.3%
		2013	268.2	22.6	23.9	8.4%	8.9%	47.0	17.5%
Llay	74	2006	287.5	44.8	26.1	15.6%	9.1%	70.8	24.6%
		2009	287.5	44.8	26.3	15.6%	9.1%	71.1	24.7%
		2013	287.5	44.8	27.3	15.6%	9.5%	72.0	25.0%
Rhosllanerchrugog / Penycae	57	2006	351.7	18.4	33.1	5.2%	9.4%	51.5	14.6%
		2009	351.7	18.4	37.1	5.2%	10.5%	55.4	15.8%
		2013	351.7	18.4	36.3	5.2%	10.3%	55.0	15.6%
Rossett	151	2006	102.7	5.2	12.4	5.1%	12.1%	17.6	17.2%

		2009	102.7	5.2	12.4	5.1%	12.0%	17.6	17.1%
		2013	102.7	4.7	13.1	4.6%	12.8%	18.0	17.5%
Ruabon	150	2006	103.3	4.6	12.1	4.5%	11.7%	16.7	16.2%
		2009	103.3	4.6	11.7	4.5%	11.3%	16.3	15.8%
		2013	103.3	4.6	12.8	4.5%	12.4%	17.0	16.5%
Wrexham	14	2006	1470.8	61.9	94.5	4.2%	6.4%	156.4	10.6%
		2009	1470.8	61.9	133.9	4.2%	9.1%	195.8	13.3%
		2013	1470.8	63.7	143.0	4.3%	9.7%	206.7	14.1%
WREXHAM TOTAL		2006	3790.1	271.7	327.6	7.2%	8.6%	599.4	15.8%
		2009	3790.1	271.7	372.3	7.2%	9.8%	644.1	17.0%
		2013	3790.1	271.6	387.0	7.2%	10.2%	658.6	17.4%

Table 7: Summary breakdown of town amenity tree and woodland cover in 2006, 2009 and 2013



Wrexham - Bellevue Park, Parciau. An example of an Edwardian formal park boosting fine avenues of mature trees. The park was extensively re-vitalised in 1999 and has held Green Flag status since 2005. Planting of young trees, seen along the paths, are part of the long-term investment in ultimately having to replace the existing canopy. This canopied legacy, stretching back 100 years, has benefited generations of local residents who, living in a tight built-up areas, have been fortunate enough to have had ready access to this green space. © Crown Copyright: RCAHMW

3.5 Summary: actionable findings

Identifying landowners to promote better care and planting of trees

The distribution of Wrexham's urban tree resource amongst 12 land uses has demonstrated the wide range of public and private stakeholders that have a decisive impact on the county's existing and future urban canopy cover. The strategic delivery of increasing canopy cover will be greatly facilitated if existing funding streams of respective landowners' budgets can be tapped into in order to support the delivery of a high quality environment and infrastructure across urban Wrexham. In doing so, this would recognise the huge contribution that trees make to ecosystem services.

Identifying quantity and quality of tree cover to improve the provision and management of trees where best aligned to communities needs

The case for distinguishing between woodland and amenity canopy cover is useful where:

- Quantity; where woodland cover increases a town's canopy but, in terms of benefits to neighbourhoods, they are often not realising their potential due to lack of management or accessibility.
- Quality; where regular tree management in parks, gardens and streets provide a cared-for appearance. These are the trees that, whilst not extensive in terms of canopy, tend to be 'on the doorstep' of where people live and work.

The presence, or not, of woodland is clearly a factor in accounting for the highs and lows of the South Wales Valley and coastal towns, with most of Wrexham's towns recording high levels of woodland. The open-space land-use categories host the majority of woodland cover, with private gardens being the major provider of towns' amenity trees. Examining woodland vs. amenity cover at a ward level helps to understand that the make-up of the local landscape plays a major role in determining high and low cover. Despite the broad high and low cover distinctions between the Valleys and coasts, affluent versus deprived areas, there are numerous specific examples where woodland significantly raises canopy levels in both localities.

Further detailed analysis and ground-truthing would usefully reveal:

- Evidence as to the exact spatial balance between 'wooded' and 'amenity tree' areas within communities.
- To what degree quantity and quality of tree cover align with the needs of where people live, work and play and where targeted tree planting is required.

Identifying amenity tree and woodland loss, aligning with decline in canopy cover and highlighting specific town and county concerns for further investigation

The loss of large long-lived trees is concerning. This maturing Victorian and Edwardian legacy, whilst at some point in need of replacement, does offer urban society the greatest benefits. The danger is that these trees are not being replaced and where they are, small, short-lived trees offering fewer overall benefits take their place. A consistent, resourced and planned approach is needed to:

- Protect and care for the Victorian and Edwardian legacy of large trees

- Promote planting of large canopy specimens.

Initial analysis combining tree count and canopy cover loss across counties highlights specific towns where a diminishing tree resource is apparent. The next steps for local authorities and NRW would be to:

- Undertake detailed interrogation of the survey data, ascertaining both the validity of the highlighted concerns and identifying in detail where specific loss is occurring.
- Undertake complimentary ground-truthing across towns to further understand and explain the reasons behind tree removal and their rate of loss.

Identifying legislation to protect and funding to increase tree planting opportunities

Optimising some of the existing legislation to reduce tree loss and current funding tools to secure planting schemes can both facilitate in addressing canopy cover concerns. Examples of practical next steps include:

- Reviewing the effectiveness and use of existing tools and legislation for tree preservation.
- Ensuring investments in enhancing the Wales urban treescape are an eligible expenditure for grant programmes such as Vibrant and Viable Places, Coastal Communities Fund, Business Improvement District Fund Wales, Regional Transport Consortia Grant, Safe Routes in Communities.



4. Neighbourhood canopy cover – a focus on wards

This section focuses on contrasting ward level canopy cover, considering levels of deprivation where relevant, to identify where qualitative or quantitative improvements to tree cover might be needed.

Analysis and findings are presented as follows:

- 4.1 Best and worst canopied urban wards
- 4.2 Multiple deprivation and canopy cover
- 4.3 Summary: actionable findings



4.1 Best and worst canopied urban wards

Town ward by ward canopy cover breakdown

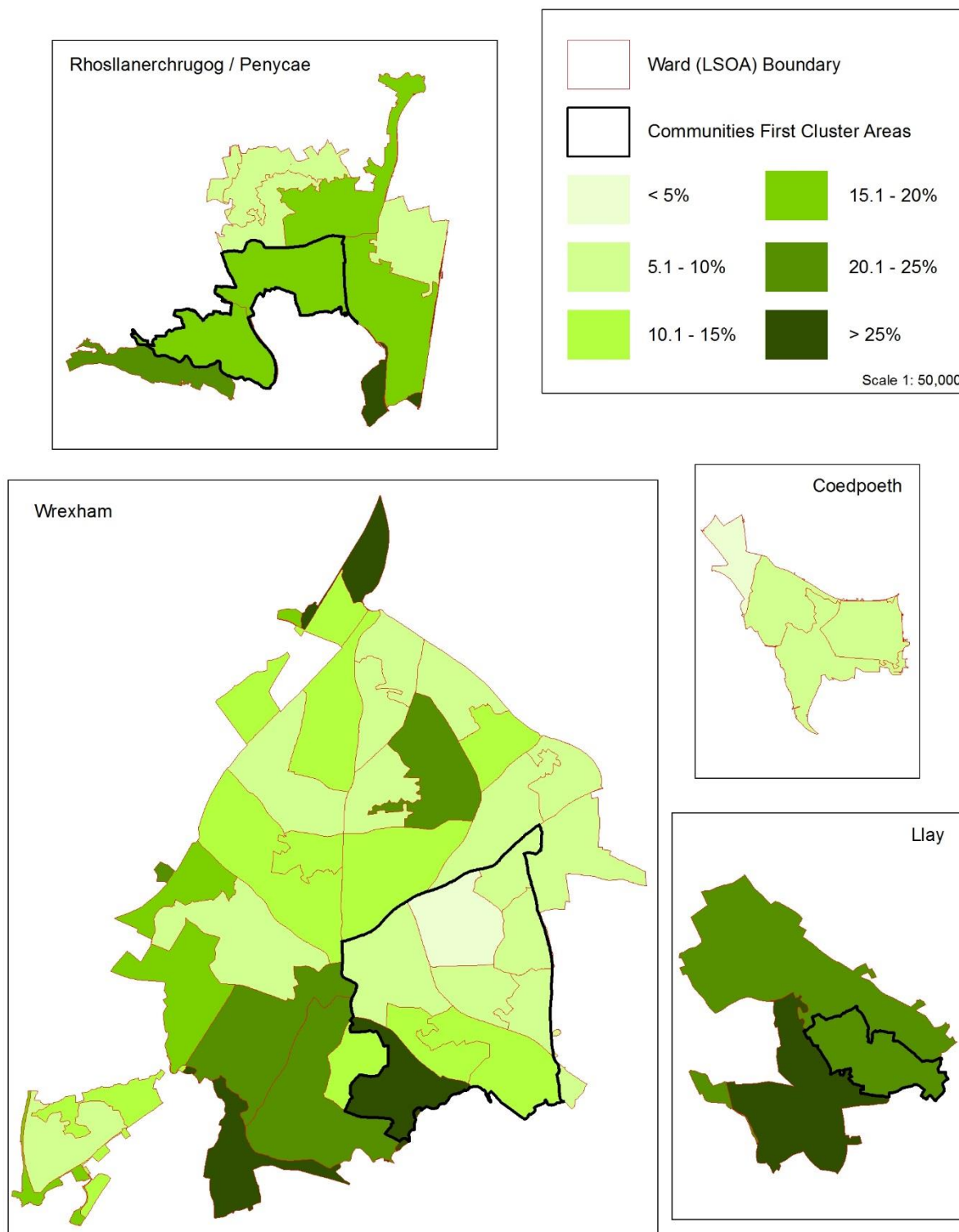


Figure 11: Town Ward by Ward Canopy Cover Breakdown (1 of 2)

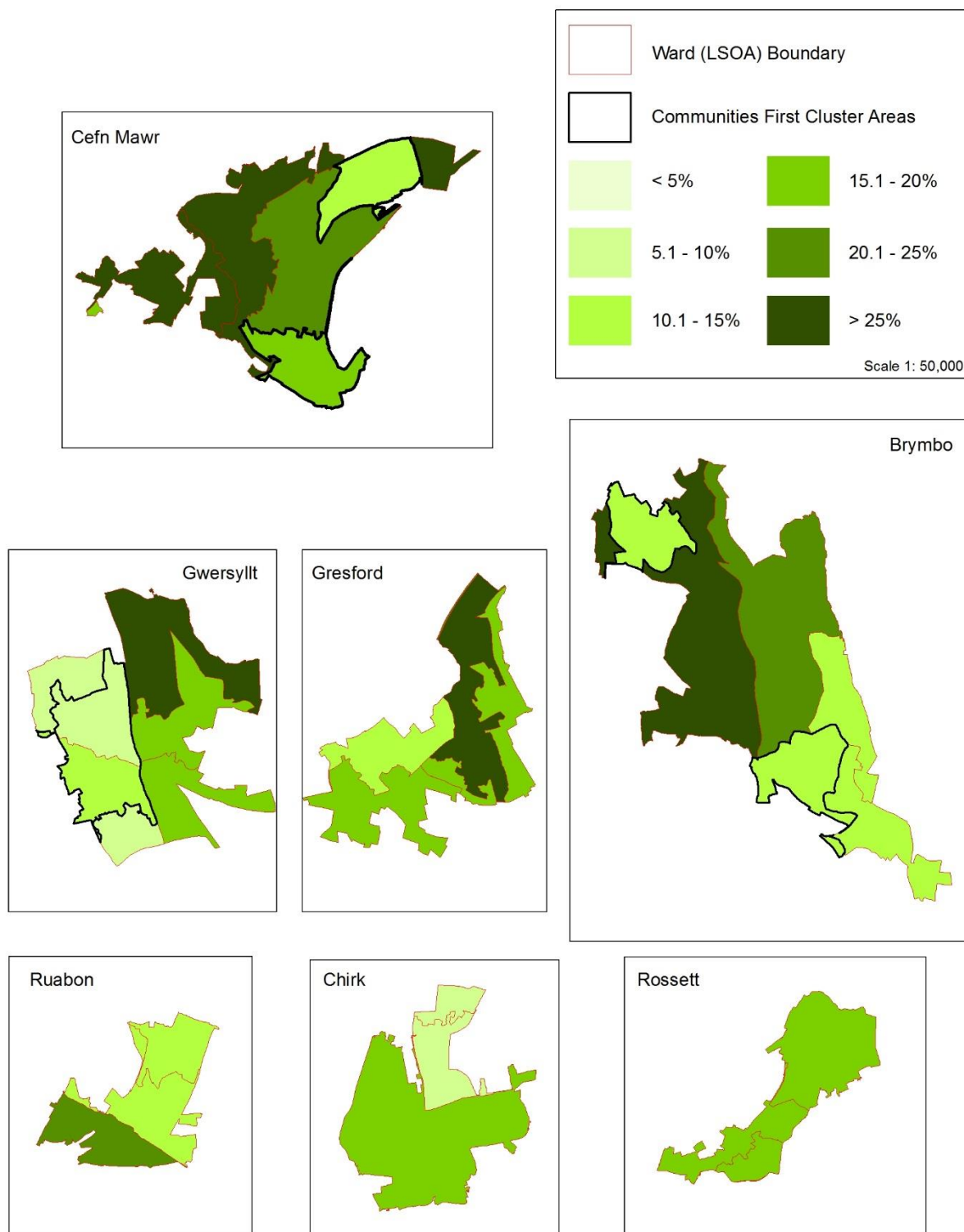


Figure 12: Town Ward by Ward Canopy Cover Breakdown (2 of 2)

4.2 Multiple deprivation and tree canopy cover

Wales' Index of Multiple Deprivation (WIMD)

No	Key	WIMD Category	Total No. of Wards	TCWTC Urban Area (ha)
1	Most Deprived	0-10%	1 - 190	5
2		10-20%	191 - 380	7
3		20-30%	381 - 570	13
4		30-50%	571 - 950	12
5	Least Deprived	50-100%	951 - 1896	40
Total			77	3790

Table 8: Distribution of Wrexham County Borough's wards (LSOAs) as per the Welsh Index of Multiple Deprivation 2011

'Top 10' most canopied and 'Bottom 10' least canopied urban wards and WIMD

Canopy Rank	Urban Area	Ward / WIMD Category	Urban Area in Ward (ha)	Canopy Cover %
1	Wrexham	Marchwiel 1	43 of 3464	64.0%
2	Gresford	Marford and Hoseley 1	62 of 72	41.1%
3	Rhosllanerchrugog / Penycae	Ruabon 1	2 of 673	35.6%
4	Cefnmawr	Llangollen Rural	47 of 533	34.4%
5	Rhosllanerchrugog / Penycae	Ruabon 2	10 of 216	33.7%
6	Cefnmawr	Penycae and Ruabon South 1	14 of 1428	32.4%
7	Llay	Llay 2	91 of 205	32.2%
8	Wrexham	Gresford East and West 2	22 of 488	31.0%
9	Brymbo	Brymbo 1	138 of 642	29.7%
10	Gwersyllt	Gwersyllt East and South 3	71 of 152	29.5%

Table 9: 'Top10' most canopied wards (Excluding those part-wards where <1.0 hectares is included within the urban area.

Canopy Rank	Urban Area	Ward / WIMD Category	Urban Area in Ward (ha)	Canopy Cover %
1	Wrexham	Wynnstay	47 of 47	4.9%
2	Coedpoeth	Minera 1	18 of 984	5.0%
3	Wrexham	Rhosnesni 2	25 of 26	5.3%
4	Wrexham	Cartrefle 2	25 of 25	5.8%
5	Wrexham	Queensway 2	22 of 22	6.0%
6	Wrexham	Rhosnesni 1	49 of 49	6.1%
7	Chirk	Chirk North 1	11 of 496	6.1%
8	Coedpoeth	Coedpoeth 1	31 of 86	6.1%
9	Coedpoeth	Coedpoeth 2	32 of 64	6.3%
10	Rhosllanerchrugog / Penycae	Johnstown 1	35 of 42	6.9%

Table 10: 'Bottom 10' least canopied wards (Excluding those part-wards where <1.0 hectares is included within the urban area.

Canopy Cover in Communities First Cluster Areas

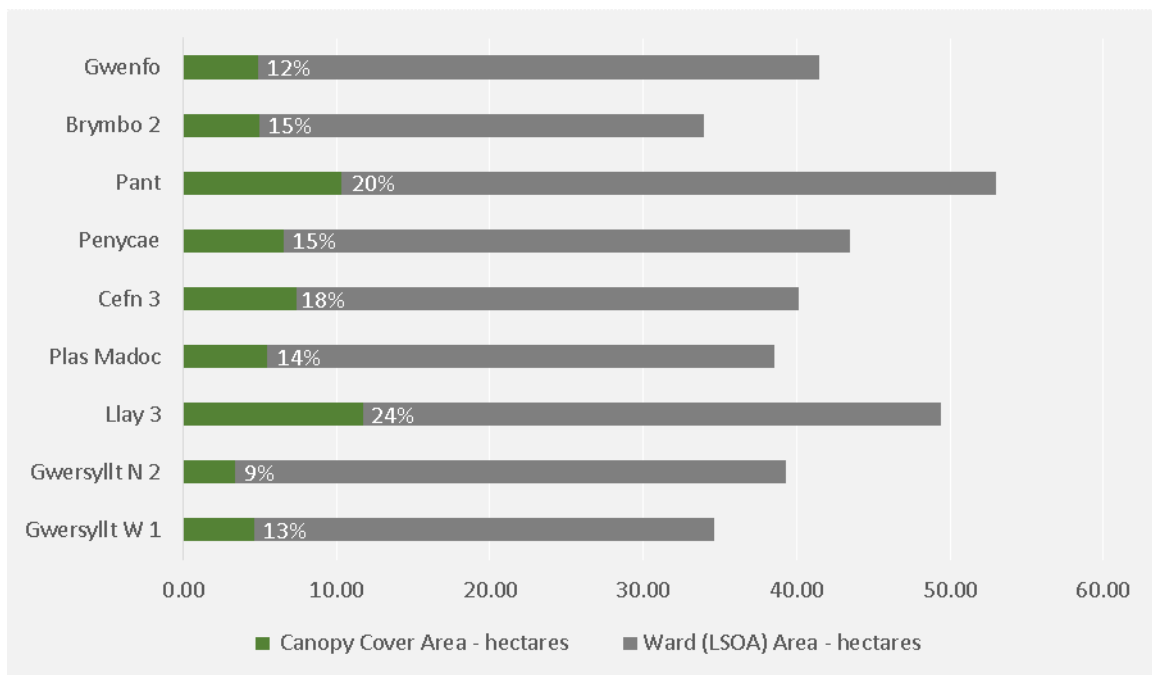


Figure 13: 'Wrexham's Urban Villages' Communities First cluster area (Including Brymbo, Rhosllanerchrugog / Penycae, Cefnmawr, Llay and Gwersyllt). The extent of canopy cover (both hectareage and %) is expressed as part of the total ward area falling within the defined urban area.

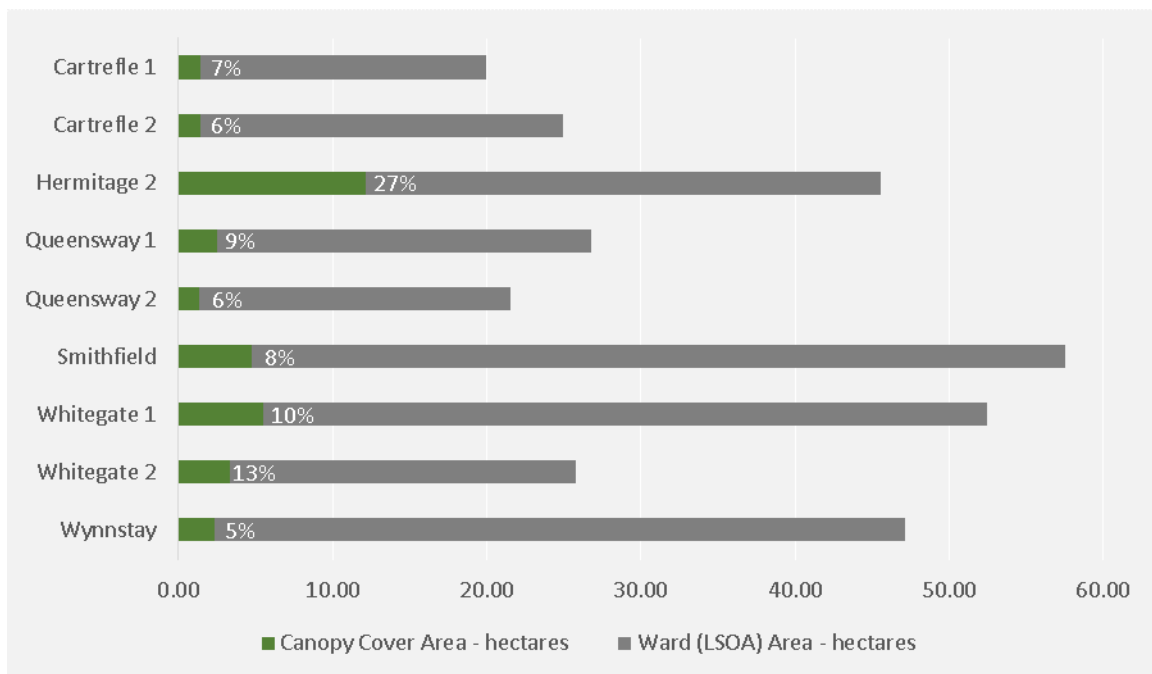


Figure 14: Canopy Cover in 'Caia Park and Hightown' Communities First Cluster Area. The extent of canopy cover (both hectareage and %) is expressed as part of the total ward area falling within the defined urban area.

Ward by Ward (LSOAs) Canopy Cover



Ward (LSOA) with WIMD (Cluster Area Ward highlighted)	Total Ward Area (ha)	Town Area in ward (ha)	Amenity Trees 2006 (ha)	NFI Cover 2011 (ha)	Total Cover TCWTC 1 (ha)	Total % Cover TCWTC 1	Amenity Trees 2009 (ha)	NFI Cover 2011 (ha)	Total Cover TCWTC 2 (ha)	Total % Cover TCWTC 2	Amenity Trees 2013 (ha)	NFI Cover 2014 (ha)	Total Cover TCWTC 3 (ha)	Total % Cover TCWTC 3
Brymbo														
Brymbo 1	641.85	138.29	12.99	27.75	40.74	29.5%	15.19	27.75	42.93	31.0%	15.70	25.25	40.94	29.7%
Brymbo 2	59.17	34.00	1.48	2.01	3.49	10.3%	3.13	2.01	5.14	15.1%	2.99	2.01	5.00	14.7%
Bryn Cefn	208.39	125.64	11.44	12.17	23.60	18.8%	15.79	12.17	27.96	22.3%	16.20	12.17	28.37	22.5%
Gwenfro	89.42	41.50	2.87	1.07	3.95	9.5%	3.43	1.07	4.50	10.9%	3.81	1.07	4.88	11.6%
New Broughton 1	115.55	42.71	3.92	0.86	4.79	11.2%	4.40	0.86	5.26	12.3%	4.76	0.86	5.63	13.1%
New Broughton 2	56.31	36.88	1.75	2.04	3.79	10.3%	2.46	2.04	4.50	12.2%	2.61	2.04	4.66	12.6%
Cefnawr														
Cefn 1	544.48	74.46	7.74	10.57	18.31	24.6%	8.40	10.57	18.97	25.5%	9.18	10.57	19.74	26.7%
Cefn 2	87.25	87.22	10.66	9.60	20.26	23.2%	11.20	9.60	20.80	23.8%	11.86	8.84	20.71	23.8%
Cefn 3	130.89	40.17	3.95	2.86	6.82	17.0%	4.34	2.86	7.20	17.9%	4.50	2.86	7.37	18.3%
Llangollen 3	1327.42	0.93	0.32	0.00	0.32	34.2%	0.35	0.00	0.35	37.9%	0.17	0.00	0.17	17.0%
Llangollen Rural	532.82	47.08	4.87	9.77	14.64	31.1%	6.16	9.77	15.93	33.8%	6.38	9.77	16.15	34.4%
Penycae and Ruabon South 1	1427.77	14.37	3.19	1.64	4.84	33.7%	2.33	1.64	3.98	27.7%	2.89	1.64	4.53	32.4%
Plas Madoc	41.58	38.52	2.43	2.51	4.94	12.8%	2.79	2.51	5.31	13.8%	2.99	2.51	5.50	14.3%
Chirk														
Chirk North 1	496.18	11.36	0.53	0.00	0.53	4.7%	0.59	0.00	0.59	5.2%	0.67	0.00	0.67	6.1%
Chirk North 2	57.05	27.45	2.27	0.01	2.28	8.3%	2.26	0.01	2.28	8.3%	2.38	0.01	2.39	8.9%
Chirk South	1355.55	132.79	11.18	7.65	18.83	14.2%	12.06	7.65	19.72	14.8%	12.28	8.58	20.86	15.7%
Coedpoeth														
Coedpoeth 1	86.43	31.11	2.20	0.00	2.20	7.1%	1.68	0.00	1.68	5.4%	1.89	0.00	1.89	6.1%

Ward (LSOA) with WIMD (Cluster Area Ward highlighted)	Total Ward Area (ha)	Town Area in ward (ha)	Amenity Trees 2006 (ha)	NFI Cover 2011 (ha)	Total Cover TCWTC 1 (ha)	Total % Cover TCWTC 1	Amenity Trees 2009 (ha)	NFI Cover 2011 (ha)	Total Cover TCWTC 2 (ha)	Total % Cover TCWTC 2	Amenity Trees 2013 (ha)	NFI Cover 2014 (ha)	Total Cover TCWTC 3 (ha)	Total % Cover TCWTC 3
Coedpoeth 2	64.11	32.27	2.45	0.27	2.72	8.4%	1.60	0.27	1.87	5.8%	1.75	0.27	2.02	6.3%
Coedpoeth 3	385.73	38.59	3.57	0.88	4.45	11.5%	2.70	0.88	3.58	9.3%	3.01	0.88	3.89	10.0%
Minera 1	983.62	18.14	1.34	0.04	1.38	7.6%	0.78	0.04	0.82	4.5%	0.86	0.04	0.90	5.0%
Gresford														
Gresford East and West 1	107.58	37.50	4.50	2.55	7.05	18.8%	2.95	2.55	5.50	14.7%	2.84	2.55	5.40	14.2%
Gresford East and West 2	488.41	50.57	8.65	1.52	10.17	20.1%	6.83	1.52	8.35	16.5%	7.01	1.52	8.53	16.7%
Marford and Hoseley 1	71.87	61.78	9.84	15.90	25.75	41.7%	7.21	15.90	23.12	37.4%	6.93	18.55	25.48	41.1%
Marford and Hoseley 2	241.89	41.72	10.28	0.63	10.90	26.1%	7.46	0.63	8.09	19.4%	7.19	0.63	7.82	18.6%
Rossett 2	1416.89	0.80	0.11	0.08	0.19	23.6%	0.09	0.08	0.17	21.4%	0.13	0.08	0.22	21.6%
Gwersyllt														
Gwersyllt East and South 1	57.79	42.27	4.75	3.52	8.27	19.6%	4.78	3.52	8.30	19.6%	4.66	3.52	8.19	19.5%
Gwersyllt East and South 2	188.90	38.02	5.82	0.80	6.62	17.4%	6.00	0.80	6.80	17.9%	5.47	0.80	6.28	16.5%
Gwersyllt East and South 3	151.58	70.58	2.49	18.44	20.93	29.7%	3.19	18.44	21.63	30.6%	3.74	16.64	20.38	28.7%
Gwersyllt North 1	181.82	24.91	1.89	0.21	2.11	8.5%	1.99	0.21	2.20	8.8%	1.71	0.21	1.92	7.7%
Gwersyllt North 2	42.57	39.28	3.69	0.00	3.69	9.4%	3.29	0.00	3.29	8.4%	3.38	0.00	3.38	8.6%
Gwersyllt West 1	61.38	34.64	3.86	1.46	5.32	15.4%	3.46	1.46	4.92	14.2%	3.18	1.46	4.64	13.3%
Gwersyllt West 2	103.61	18.53	2.31	0.00	2.31	12.5%	1.97	0.00	1.97	10.6%	1.72	0.00	1.72	9.0%
Llay														
Llay 1	631.86	147.28	15.66	14.00	29.66	20.1%	16.33	14.00	30.33	20.6%	17.03	14.00	31.03	21.1%
Llay 2	205.15	90.81	5.20	24.24	29.44	32.4%	4.79	24.24	29.03	32.0%	5.04	24.24	29.28	32.2%
Llay 3	69.81	49.39	5.18	6.53	11.71	23.7%	5.16	6.53	11.69	23.7%	5.17	6.53	11.70	23.7%
Rhosllanerchrugog / Penycae														
Johnstown 1	42.46	34.65	2.13	0.00	2.13	6.1%	2.44	0.00	2.44	7.1%	2.42	0.00	2.42	6.9%
Johnstown 2	65.80	65.72	6.82	3.77	10.59	16.1%	6.77	3.77	10.54	16.0%	7.24	3.77	11.00	16.7%
Pant	73.08	52.99	5.32	4.57	9.89	18.7%	5.97	4.57	10.54	19.9%	5.78	4.57	10.35	19.5%

Ward (LSOA) with WIMD (Cluster Area Ward highlighted)	Total Ward Area (ha)	Town Area in ward (ha)	Amenity Trees 2006 (ha)	NFI Cover 2011 (ha)	Total Cover TCWTC 1 (ha)	Total % Cover TCWTC 1	Amenity Trees 2009 (ha)	NFI Cover 2011 (ha)	Total Cover TCWTC 2 (ha)	Total % Cover TCWTC 2	Amenity Trees 2013 (ha)	NFI Cover 2014 (ha)	Total Cover TCWTC 3 (ha)	Total % Cover TCWTC 3
Penycae	153.63	43.49	3.85	2.51	6.36	14.6%	4.44	2.51	6.95	16.0%	4.07	2.51	6.58	15.3%
Penycae and Ruabon South 2	1755.81	27.93	2.52	3.64	6.16	22.1%	2.87	3.64	6.51	23.3%	2.33	3.64	5.97	21.3%
Ponciau 1	502.84	53.21	6.58	1.34	7.92	14.9%	7.89	1.34	9.23	17.4%	7.94	1.34	9.28	17.5%
Ponciau 2	338.88	29.97	1.89	0.03	1.92	6.4%	2.01	0.03	2.03	6.8%	2.09	0.03	2.12	7.1%
Ponciau 3	1024.25	31.43	2.08	0.53	2.61	8.3%	2.51	0.53	3.05	9.7%	2.26	0.53	2.80	9.0%
Ruabon 1	672.53	1.94	0.66	0.01	0.67	34.5%	0.58	0.01	0.59	30.2%	0.70	0.01	0.71	35.6%
Ruabon 2	215.86	10.36	1.24	1.95	3.19	30.8%	1.57	1.95	3.52	34.0%	1.42	1.95	3.37	33.7%
Rossett														
Rossett 1	1137.91	74.45	7.49	5.23	12.71	17.1%	7.50	5.23	12.73	17.1%	8.26	4.73	12.99	17.6%
Rossett 2	1416.89	28.25	4.89	0.00	4.89	17.3%	4.87	0.00	4.87	17.2%	4.85	0.00	4.85	17.3%
Ruabon														
Penycae and Ruabon South 1	1427.77	35.77	4.07	4.31	8.37	23.4%	4.35	4.31	8.65	24.2%	4.46	4.31	8.76	24.3%
Ruabon 1	672.53	27.25	2.41	0.11	2.53	9.3%	2.50	0.11	2.61	9.6%	2.68	0.11	2.80	10.4%
Ruabon 2	215.86	40.24	5.60	0.21	5.81	14.4%	4.85	0.21	5.06	12.6%	5.60	0.21	5.82	14.5%
Wrexham														
Acton 1	57.25	57.25	5.59	3.75	9.34	16.3%	8.11	3.75	11.85	20.7%	8.14	3.75	11.89	20.9%
Acton 2	31.62	31.62	2.02	0.00	2.02	6.4%	2.84	0.00	2.84	9.0%	3.15	0.00	3.15	9.8%
Borras Park 1	27.77	27.30	1.37	0.70	2.07	7.6%	2.21	0.70	2.91	10.7%	2.01	0.70	2.71	10.0%
Borras Park 2	32.74	31.41	1.34	0.44	1.79	5.7%	2.66	0.44	3.10	9.9%	2.56	0.44	3.00	9.7%
Brynyffynnon 1	173.12	84.37	7.46	1.43	8.89	10.5%	9.99	1.43	11.43	13.5%	10.40	2.43	12.83	15.3%
Brynyffynnon 2	73.08	73.08	4.65	0.64	5.29	7.2%	6.81	0.64	7.45	10.2%	6.40	0.64	7.04	9.6%
Cartrefle 1	19.94	19.94	1.02	0.00	1.02	5.1%	1.51	0.00	1.51	7.6%	1.45	0.00	1.45	7.3%
Cartrefle 2	24.93	24.93	0.83	0.00	0.83	3.3%	1.33	0.00	1.33	5.4%	1.44	0.00	1.44	5.8%
Erddig	90.85	90.52	5.36	10.70	16.06	17.7%	8.34	10.70	19.04	21.0%	9.54	10.70	20.24	22.2%
Esclusham 1	42.55	39.40	3.26	0.67	3.93	10.0%	2.31	0.67	2.98	7.6%	2.55	0.67	3.23	8.3%

Ward (LSOA) with WIMD (Cluster Area Ward highlighted)	Total Ward Area (ha)	Town Area in ward (ha)	Amenity Trees 2006 (ha)	NFI Cover 2011 (ha)	Total Cover TCWTC 1 (ha)	Total % Cover TCWTC 1	Amenity Trees 2009 (ha)	NFI Cover 2011 (ha)	Total Cover TCWTC 2 (ha)	Total % Cover TCWTC 2	Amenity Trees 2013 (ha)	NFI Cover 2014 (ha)	Total Cover TCWTC 3 (ha)	Total % Cover TCWTC 3
Esclusham 2	177.93	28.71	3.25	0.59	3.83	13.3%	2.27	0.59	2.86	10.0%	2.64	0.66	3.30	11.4%
Garden Village	56.25	55.66	3.53	0.71	4.24	7.6%	5.42	0.71	6.12	11.0%	5.46	0.71	6.17	11.0%
Gresford East and West 2	488.41	22.48	1.46	4.15	5.60	24.9%	2.43	4.15	6.58	29.3%	2.67	4.15	6.81	31.0%
Grosvenor 1	18.43	18.43	1.03	0.00	1.03	5.6%	1.58	0.00	1.58	8.6%	1.91	0.00	1.91	10.6%
Grosvenor 2	86.32	84.53	5.65	0.00	5.65	6.7%	8.02	0.00	8.02	9.5%	8.85	0.00	8.85	10.4%
Gwersyllt East and South 2	188.90	38.84	2.59	0.07	2.66	6.9%	4.27	0.07	4.34	11.2%	4.56	0.07	4.63	11.9%
Gwersyllt East and South 3	151.58	2.21	0.15	0.09	0.23	10.5%	0.29	0.09	0.38	17.1%	0.23	0.09	0.32	15.9%
Hermitage 1	22.22	22.22	1.57	0.00	1.57	7.1%	1.97	0.00	1.97	8.9%	2.25	0.00	2.25	10.2%
Hermitage 2	46.27	45.60	3.27	6.59	9.86	21.6%	5.06	6.59	11.66	25.6%	5.59	6.59	12.18	26.7%
Holt 1	3733.74	55.00	2.11	0.00	2.11	3.8%	4.13	0.00	4.14	7.5%	4.71	0.00	4.71	8.6%
Little Acton 1	27.50	26.55	1.21	0.00	1.21	4.6%	2.35	0.00	2.35	8.9%	2.26	0.00	2.26	8.4%
Little Acton 2	25.39	25.39	1.46	0.00	1.46	5.7%	1.94	0.00	1.94	7.6%	1.90	0.00	1.90	7.6%
Maesydre	67.79	67.79	4.70	0.00	4.70	6.9%	7.16	0.00	7.16	10.6%	7.59	0.00	7.59	11.2%
Marchwiel 1	3463.58	43.31	2.79	22.89	25.67	59.3%	3.96	22.89	26.84	62.0%	4.15	23.37	27.52	64.0%
New Broughton 1	115.55	1.93	0.26	0.00	0.26	13.5%	0.44	0.00	0.44	22.9%	0.46	0.00	0.46	23.2%
Offa	79.66	79.64	7.12	5.92	13.04	16.4%	8.90	5.92	14.82	18.6%	10.61	6.18	16.79	21.0%
Ponciau 1	502.84	9.11	1.67	0.30	1.97	21.6%	1.42	0.30	1.72	18.8%	1.42	0.30	1.72	19.1%
Queensway 1	26.76	26.76	1.57	0.00	1.57	5.9%	2.42	0.00	2.42	9.1%	2.54	0.00	2.54	9.5%
Queensway 2	21.55	21.55	0.77	0.00	0.77	3.6%	1.23	0.00	1.23	5.7%	1.33	0.00	1.33	6.0%
Rhosnesni 1	48.66	48.66	1.84	0.00	1.84	3.8%	3.09	0.00	3.09	6.4%	2.97	0.00	2.97	6.1%
Rhosnesni 2	25.89	25.35	0.86	0.00	0.86	3.4%	1.66	0.00	1.66	6.6%	1.34	0.00	1.34	5.3%
Smithfield	57.52	57.52	2.80	0.00	2.80	4.9%	4.55	0.00	4.55	7.9%	4.76	0.00	4.76	8.3%
Stansty	59.00	58.42	3.15	0.63	3.78	6.5%	4.21	0.63	4.84	8.3%	4.92	0.63	5.55	9.6%
Whitegate 1	58.59	52.43	3.09	0.88	3.97	7.6%	4.28	0.88	5.16	9.8%	4.63	0.88	5.50	10.6%
Whitegate 2	25.80	25.80	1.89	0.78	2.67	10.3%	2.43	0.78	3.22	12.5%	2.58	0.78	3.37	12.9%

Ward (LSOA) with WIMD (Cluster Area Ward highlighted)	Total Ward Area (ha)	Town Area in ward (ha)	Amenity Trees 2006 (ha)	NFI Cover 2011 (ha)	Total Cover TCWTC 1 (ha)	Total % Cover TCWTC 1	Amenity Trees 2009 (ha)	NFI Cover 2011 (ha)	Total Cover TCWTC 2 (ha)	Total % Cover TCWTC 2	Amenity Trees 2013 (ha)	NFI Cover 2014 (ha)	Total Cover TCWTC 3 (ha)	Total % Cover TCWTC 3
Wynnstay	47.12	47.12	1.63	0.00	1.63	3.5%	2.23	0.00	2.23	4.7%	2.30	0.00	2.30	4.9%

Table 11: Ward by Ward (LSOAs) Canopy Cover



Wrexham - Canopy cover in the Brynffynnon and Grosvenor wards: – Focussing on the town centre reveals contrasting areas of canopy cover. Across the 98 hectares 13% is tree cover, the same as Wrexham as a whole. However, apart from a), a strong presence of trees around Llwyn Isaf – the library, college, courts and Chapel Cross and, b) St Giles church, there is virtually no canopy within the core of the town centre itself. © Crown Copyright: RCAHMW

4.4 Summary: actionable findings

Adopting a ward-level focus to identify priority communities for action

Wrexham's ward-level data (LSOAs) provides a useful insight into those areas most deficient in tree cover, especially if aligning with those urban areas that have been identified as priorities for town-scale strategic action in section 2.5.

1–570 WIMD wards have already been identified as having serious social, economic and environmental problems. The low levels of tree cover that exist in the majority of these needy communities also emphasise how poorly they are provided for, in terms of pleasant, leafy surroundings. These initial findings are particularly powerful in highlighting the case for action, once further detailed scoping for opportunities has been undertaken.

Regeneration schemes focusing on designated Community First cluster areas should integrate urban forestry improvement measures looking at both quantitative and qualitative enhancement ensuring:

- Amenity trees are present where people live, shop, work and play;
- Existing woodlands are designed and managed to bring value to local communities.

One of the avenues to explore includes reviewing existing regeneration grant funding to make sure quantitative and qualitative enhancement to the local tree resource are qualifying expenditures.

Natural Resources Wales' focus on supporting and targeting action in Communities First cluster areas should, through working with partners, enable a better spatial understanding of where the priority planting needs are. Where realistic opportunities exist, pilot projects need to be resourced, implemented and publicised as exemplar case studies.

(As of October 2016 the Welsh Government has decided to bring the Communities First programme to an end – too recent to re-vamp the focus of the TCWTC study).



Chirk: Potential plantable areas – after discounting sites such as playing fields there does appear to be considerable opportunity for additional tree planting. © Crown Copyright: RCAHMMW

5. Estimating the potential for tree planting - a pilot exercise for Wrexham

This section presents a desktop methodology that was piloted across a sample 27 urban areas across Wales, including Wrexham, to identify where new tree planting might be possible.

The approach and its findings are presented as follows:

5.1 Estimating the realm of the possible: the TCWTC method – Potential canopy cover (PCC)

5.2 Potential green areas for targeting tree planting – the Wrexham pilot

5.3 Summary: actionable findings



5.1 Estimating the realm of the possible: the TCWTC method

To enable tree strategies and canopy cover targets to be fully developed, national and local government not only need a clear picture of the existing resource but also an indication of what's potentially possible to achieve.

A number of cities in the United States have been particularly proactive, in conjunction with the United States Department of Agriculture's Forest Service, in underpinning urban tree management with canopy cover mapping, stocking level information and canopy cover targets. This is all part of a far more structured approach to urban forest management than exists in the UK. *Planning the Urban Forest* and *Sustaining America's Urban Trees and Forests* are two useful introductory publications by the American Planning Association and Forest Service respectively.

Over and above existing canopy cover data, many US cities now have information on land that is potentially 'plantable' and could form 'Potential Canopy Cover' (PCC). This often focuses on:

- Impervious areas, particularly streets, through assessments of 'stocking levels'; the number of street trees that can realistically be planted within a neighbourhood.
- Green space – based on land allocation and context.

The pilot assessment of tree planting potential, conducted as part of the TCWTC study, does not have the sophistication of American models. The datasets available to Natural Resources Wales confined this exercise to identifying 'green' land without existing canopy cover. It was not possible to identify potential 'grey/impervious' land, albeit these are often the locations in tough challenging urban environs where canopy cover is most needed.

Whilst not offering a holistic assessment of the realm of the possible, the method adopted below offers the advantage of highlighting potential 'easy wins': tree planting is typically less expensive in soft landscape environs than in hard landscapes. Trees are also likely to have better chance of survival and better fulfil their genetic potential (i.e. grow as big as they can) if they have access to large soil volumes.

Twenty-seven pilot towns were selected across Wales' 22 local and three national park planning authorities based on selecting a major county town per authority, e.g. Wrexham.

Three basic categories have been identified within the urban boundary:

- Existing cover (based on 2009 canopy cover survey & NFI woodland data);
- Grey, impervious and blue areas – i.e. buildings, roads, rail and water – which might provide opportunities for tree planting, particularly along streets or within civic spaces and parking lots, but which were not included within the scope of this study;
- Green areas that theoretically could be recruited for additional tree planting, and could help increase the overall local canopy cover – i.e. areas of bare soil, grass and beds of shrubs / young trees.

The aim, of this pilot exercise is to:

- Highlight green areas to investigate for potential new (and low-cost) tree planting within, a) each urban area, b) their constituent wards, and c) each land-use category on a ward-by-ward basis.
- Offer observations as to where the key opportunities to investigate lie, in particular where the study's findings are already making the case towards increasing canopy cover in certain towns and wards.

5.2 Potential green areas for targeting tree planting – the Wrexham pilot

Assuming that the existing tree cover level remains stable as new planting conducted in target green spaces achieves 100% coverage of all these areas, Table 12 above shows that canopy cover could potentially increase by 42% in Wrexham, resulting in an overall tree coverage as high as 55%. In reality, several constraints will reduce the actual potential for increase:

- Achieving a sustainable cover in the target green areas will take a significant amount of time. Maintaining tree cover levels in existing areas will require good planning and management, underpinned by a good understanding of required tree replacement rates (and capacity to implement the required replacements). The age pyramid and species distribution of the existing tree stock will have a strong influence on the timeframe within which this will be achievable.
- Achieving a 100% cover in the target green areas is unlikely to be suitable or desirable without compromising other highly valued benefits associated with green spaces e.g. playing fields, biodiversity sites with open habitats, allotments, etc. Ground-truthing and community engagement is required, to narrow down the identified wide range of potential green locations, to ear-mark realistic and suitable sites for planting, and to determine a consensual canopy cover target.

URBAN AREA	Urban Area (ha)	'Grey' Areas (ha)	Existing Cover* (ha)	'Green' areas for potential planting (ha)	2009 Cover* %	Potential cover increase** %	Existing* + Potential** Canopy Cover %
Wrexham	1,471	660	196	615	13	42	55

Table 12: The potential to increase canopy cover in Wrexham by assessing green space without trees.

* Assuming existing tree cover remains stable overtime; ** Assuming 100% coverage is achieved in green areas targeted for planting

The figures presented in Table 12 confirm space is available to consider undertaking new planting. Together with the constraints and associated mitigation steps presented above, this suggests a methodology and starting point to begin defining approaches for increasing the local urban tree resource. What is encouraging is that those already identified as 'low cover' towns, especially Holyhead, Port Talbot and Rhyl, are all rich in green areas where increasing canopy cover might be possible.

Potential Canopy Cover - Wrexham

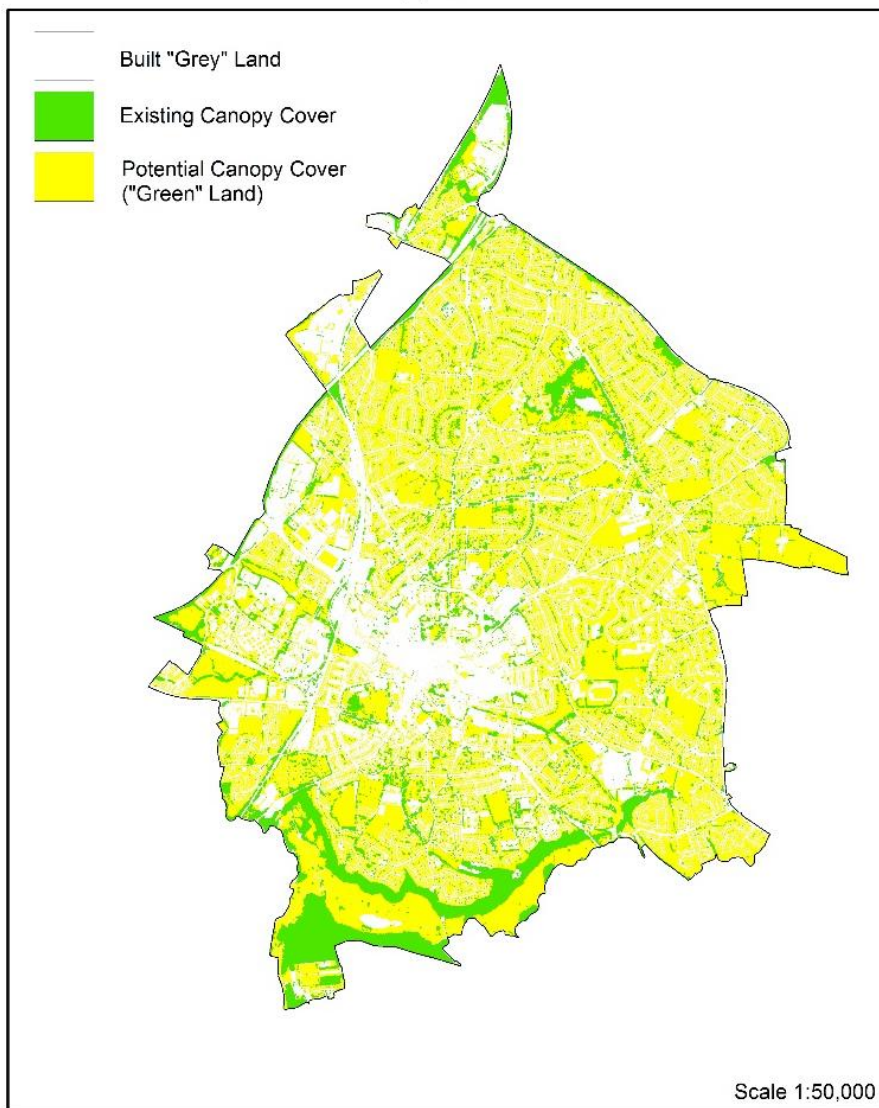


Figure 15: Wrexham's canopy cover and green areas with potential to explore new planting



Island Green Shopping Park, Wrexham

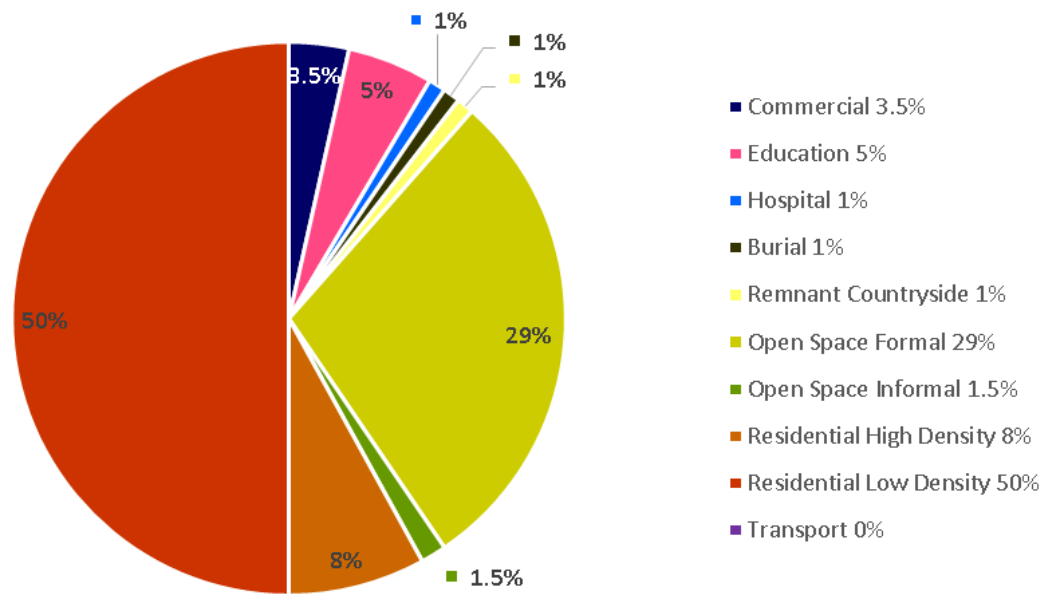


Figure 16: Wrexham's potential canopy cover per land-use



Caia Park, Wrexham

5.3 Summary: actionable findings

All towns and wards offer scope for increasing planting and canopy cover

The pilot analysis of potential areas for tree planting has focused on what might be considered as ‘easy wins’: tree planting in green spaces has fewer constraints, and often lower upfront costs, than accommodating trees within hard landscapes.

Results have shown that large tracks of ‘green’ land – both public and private – seem to offer potential for tree planting. However, a detailed, on-the-ground appraisal is needed to enable decision makers to fully understand where planting is most achievable and desirable, so as to plan effectively for a more substantial and robust urban forest.

Consideration of this town assessment approach to potential canopy cover would benefit from:

- Feedback from stakeholders, especially local authorities, as to the usefulness of this approach. Closer analysis of and comment on each county’s pilot town findings would be useful.
- An indication as to the merits of expanding the approach to other towns.
- Exploring methods to best identify and map potential ‘grey’ planting areas.

The importance of identifying land-use and available ‘green’ and ‘grey’ areas in understanding where it’s feasible to plant and set realistic canopy cover targets

The pilot conducted has also shown that in some of the densely populated and more challenging areas, focusing exclusively on green areas for spotting opportunity to increase tree cover was not enough. The approach to mapping potential areas for planting across both green and grey areas to the level of detail that US cities adopt, deserves to be investigated further and utilised as the way ahead for realistically developing tree strategies and setting urban canopy cover targets.

The next steps here would be to:

- Engage with pilot local authorities keen to take this approach to the next level of investigation;
- Select a pilot town or county, and work to build up comprehensive site-based data, enabling an approach to setting meaningful canopy cover targets.



Belle Vue Park, Wrexham

6. Conclusion: disseminating, refining and updating the data

The 'Tree Cover in Wales' Towns and Cities' – Wrexham study makes a significant contribution in pinpointing where and how much tree cover the county's towns possess. Making the most of these findings requires concerted efforts towards:

6.1 Disseminating the data

6.2 Improving and updating the dataset

6.3 Using the findings: sustaining and growing canopy cover



6.1 Disseminating the data

Communicating the Wrexham County Borough's findings

The target audience is the Wrexham County Borough Council's policy and programme formulators, the chief executive and heads of department, politicians, professional practitioners and organisations working in both, the urban green space realm and, less advantaged communities.

Copies of this county report are available from: urbantrees@naturalresourceswales.gov.uk , to where queries on its content can be forwarded.

The national TCWTC report and summary can be accessed by visiting the urban trees page on NRW's website.

Data sharing

The county and national reports are supplemented by:

- Visiting the County Local Evidence Packages from the Infobase Cymru website, to identify those towns assessed for their canopy cover.
- Accessing the Welsh Government and Natural Resources Wales Lle geo-portal website for the study datasets in GIS and tabular formats.

6.2 Improving and updating the dataset

Gathering feedback

Comments on the usefulness and format of the data provided in the county report would be welcome via: urbantrees@naturalresourceswales.gov.uk .

Following the 2016 updated TCWTC study main report and summary, continued feedback on the methodology used, the findings and next steps will be sought from the target audiences.

This will aid Natural Resources Wales to further, a) refine the evidence gathering approach, b) build on where there are gaps in knowledge, and, c) work closer together to promote urban canopy cover

Aerial photography

The next planned aerial photography capture for Wales is due in 2017. It would therefore be timely, if feasible, following the 2006, 2009 and 2013 aerial assessments, to carry out a Phase 4 survey in 2018-19. With a suite of aerials of the same resolution spanning eight years, the picture of change in canopy cover comparison will become that much more reliable.

Pre-2006 aerial photography is potentially available to test change over time for specific towns and areas of interest.

The urban boundary

A review of the land-use rules, boundary checking and, in the light of any feedback, the urban areas as currently defined by Natural Resources Wales would be beneficial. Consideration should be given to aligning with the Wrexham County Borough Council's 'settlement boundaries'.

Tree and canopy data

To provide more consistent canopy cover figures, the urban NFI components need to be analysed more closely, and where canopy diameter does not exceed 3.0 metres, these need to be omitted from the findings.

No ground-truthing has been done to date, e.g. does taking the median for each of the three tree size categories give a fair reflection of actual canopy cover?

There would be merit in separately identifying canopy cover for those 1.0–3.0 metre diameter trees - their contribution to those 'grey' areas in low cover wards, while not adding greatly to canopy cover, does have an important 'greening' impact.

What would be useful is to ascertain to what degree the Wrexham County Borough Council has, in recent years, invested heavily in planting which has yet to register as canopy cover, or has there been minimal or no programme of young recruitment planting.

Consider other tree and canopy data capture techniques, e.g. infrared hyperspectral imagery to identify tree height and species.

There is a case for adding additional layers of specific tree interest, partly related to canopy cover, e.g. tree preservation orders (TPOs), historic, ancient and veteran trees.

Public – private land ownership

There would be value in identifying private and public tree cover in towns, i.e. where Wrexham County Borough Council could influence change greatest. Public land could be categorised further e.g. parks, street trees or educational, in the quest for more informed management and seeking out opportunities for planting. Identifying canopy cover and planting opportunities on land holdings, such as Registered Social Landlords, would appear in line with much of the WIMD and 'Communities First' cluster area focus this study has adopted.

Potential planting

The planting opportunities pilot assessment for Wrexham deserve more investigation and validating on site. Case studies would help to raise the profile of this approach to setting canopy cover goals. Consider extending the approach to all towns along with refining the methodology, especially identifying potential paved 'grey' areas for trees when suitable datasets are available.

Cross-referencing datasets

The cross mapping with WIMD has been revealing and it would be equally invaluable to do more research against datasets such as air quality, health, temperature, flood risk, property values, crime, wildlife connectivity and access to green-space. In terms of an ecosystem approach these would no doubt highlight particular urban areas that would benefit from additional canopy cover.

This study only identified trees and woodland within the built boundary. Urban fringe woodland is also important for potential recreational access and as a backdrop to life. An assessment of the degree of woodland beyond town boundaries would highlight communities lacking in trees on both counts, making their case for 'action on the ground' greater.

Valuing the benefits of tree cover

In due course NRW, The Open University and Forest Research intend to upload this study's dataset onto the Treezilla 'Monster Map' site as point data. Over time Wrexham County Borough Council, community groups and individuals can input species, girth, height, crown and ground surface information to those specific trees, which then generates values as to the benefits that tree provides society.

The 'Valuing Wrexham's Urban Forest' i-Tree Eco report (2014) revealed an understanding of the county's urban forest structure, i-Tree Eco also crucially quantifies and values the ecosystem benefits urban trees provide. The report highlights the cost / benefit effectiveness of trees in contributing to tackling many of today's urban challenges from infrastructure provision to the health and well-being of communities.

6.3 Using the findings: sustaining and growing canopy cover

The TCWTC study provides Wrexham County Borough Council with a critical component of the evidence base they need to produce a tree and green infrastructure strategy that can be embedded in policy through guidance, development and related infrastructure plans. However, a tree strategy must be fully costed to realistically sustain and grow the urban forest. To this end Wrexham County Borough Council first need to know their tree resource. A major outcome from the strategy should be the setting of a local canopy cover goal, grounded in a good understanding of their existing tree resource – which the TCWTC data goes a long way in facilitating.

The TCWTC study provides the Wrexham County Borough Council and others with solid evidence of the state of the county's urban forest, both in terms of extent and distribution as well as of its evolution. This has highlighted some important issues regarding:

- Canopy cover loss: the TCWTC study show clear evidence that 8 urban areas have lost canopy cover between 2009 and 2013.
- Canopy cover discrepancies between towns and wards.
- Unfulfilled potential to better use land for increasing cover.
- The findings provide grounds to undertake a review on current legislation and guidelines as to their effectiveness on delivering ecosystem goals, e.g. TPOs and ensuring robust conditions are adhered to on development sites.

The TCWTC study provides local community champions and third sector organisations, such as local tree ambassadors and tree wardens, with an open source dataset to inform their work in taking local action to increase and care for canopy cover, as well as to spread the word about the value of trees to the wider public:

Public Service Boards have a crucial role to play in bringing together public, private and voluntary organisations to address issues where tree cover can offer solutions.

Active local campaigners groups such as GAG (Greener Aberystwyth Group) work tirelessly to raise tree and green space issues amongst fellow residents and work alongside Ceredigion Council. Their existence has been very much a contributory factor in securing the 2012-14, £375,000 funded, Coed Aber project.

Examining the neighbourhood tree approach, adopted successfully in many US cities and piloted over here in places such as Hackney, London and Bristol, there is potentially the appetite to engage more fully with residents in tree-planting and on-going maintenance projects.

